

318000

318500

319000

319500

422

422

417

G7

H7

I7

J7

4909000

G8

H8

I8

J8

4908500

G9

H9

I9

J9

4908000

Пойма реки Горкушка

Горкушка

404

G10

H10

I10

J10

4907500

бас.

G11

H11

I11

J11

4907000

ол. ст. Верхнебалковский

388

385

389

J12

320000

320500

321000

321500

424

415

K7

L7

M7

N7

417

419

K8

L8

M8

N8

415

405

414

405

K9

L9

M9

N9

401

396

395

394

K10

L10

M10

N10

385

382

K11

L11

M11

N11

374

375

разв.

375

арм.к.

Горкушка

369

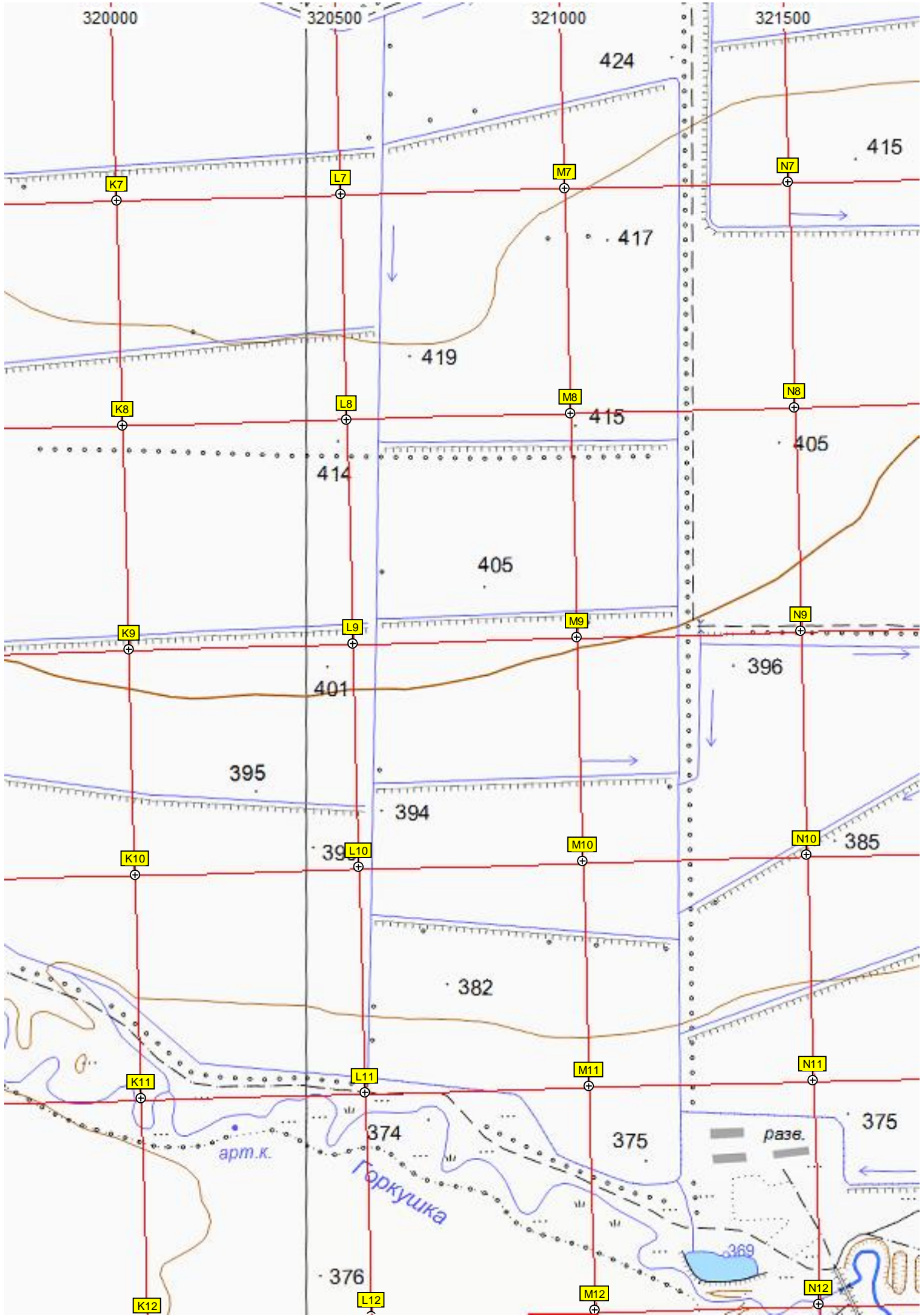
376

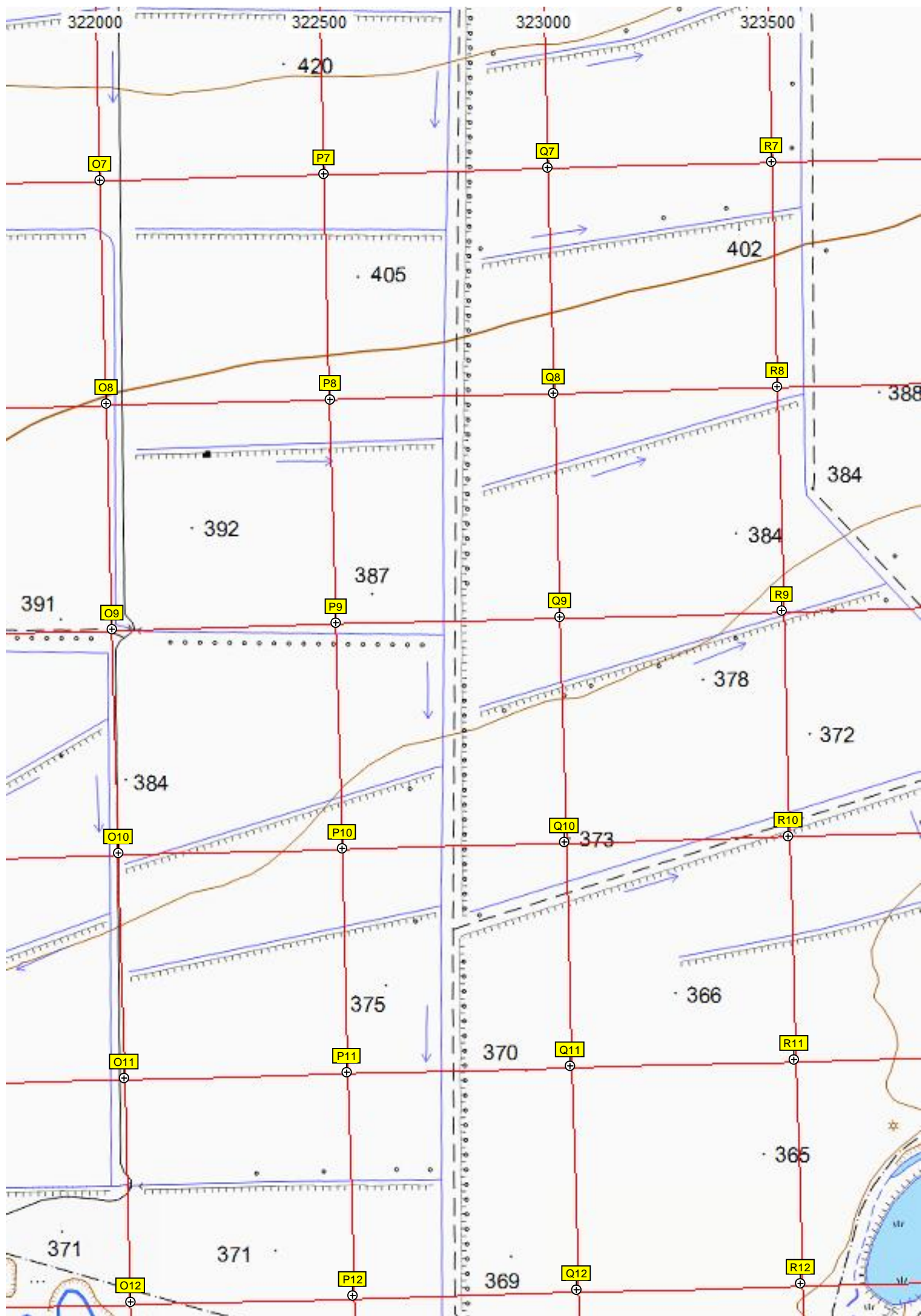
K12

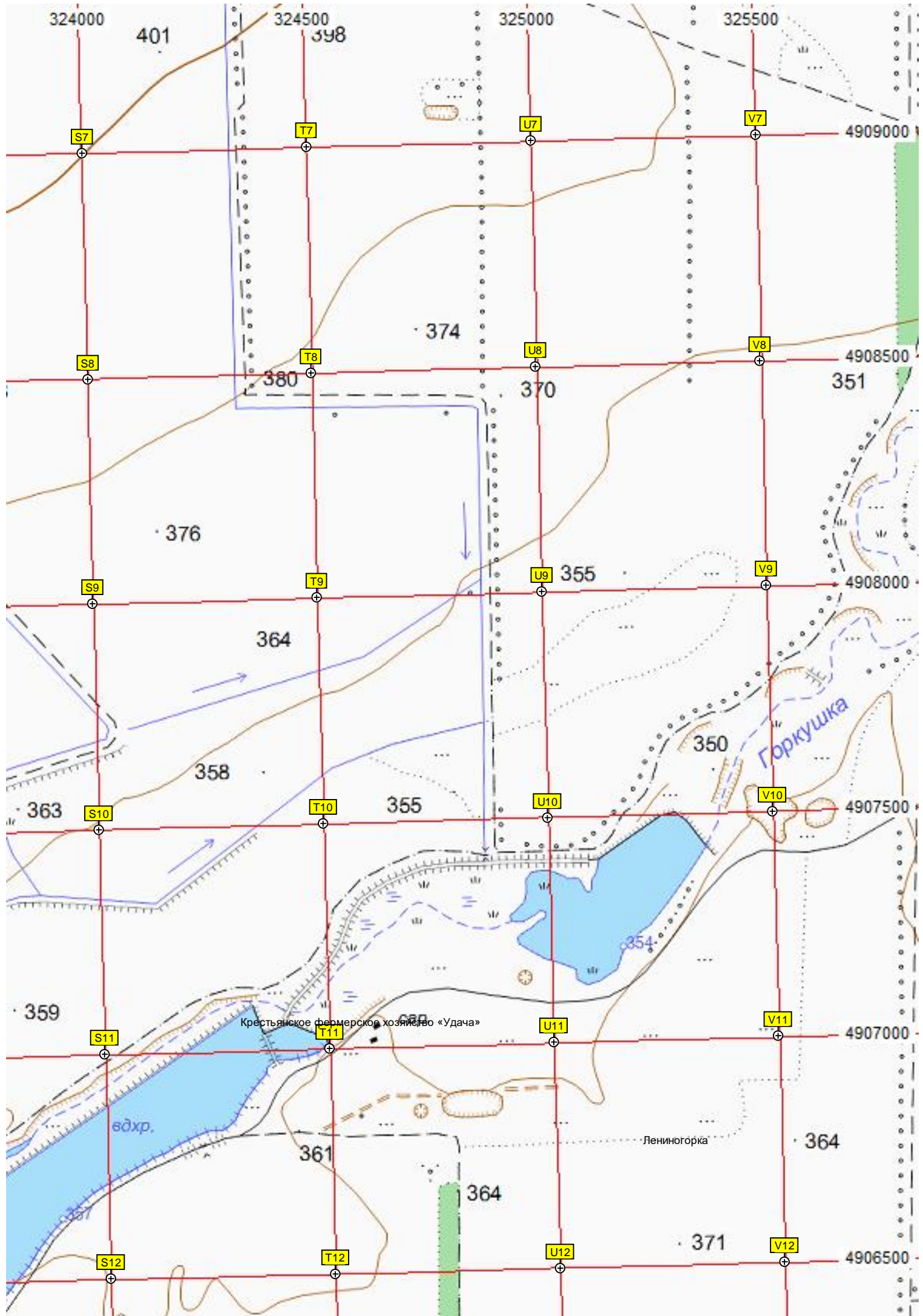
L12

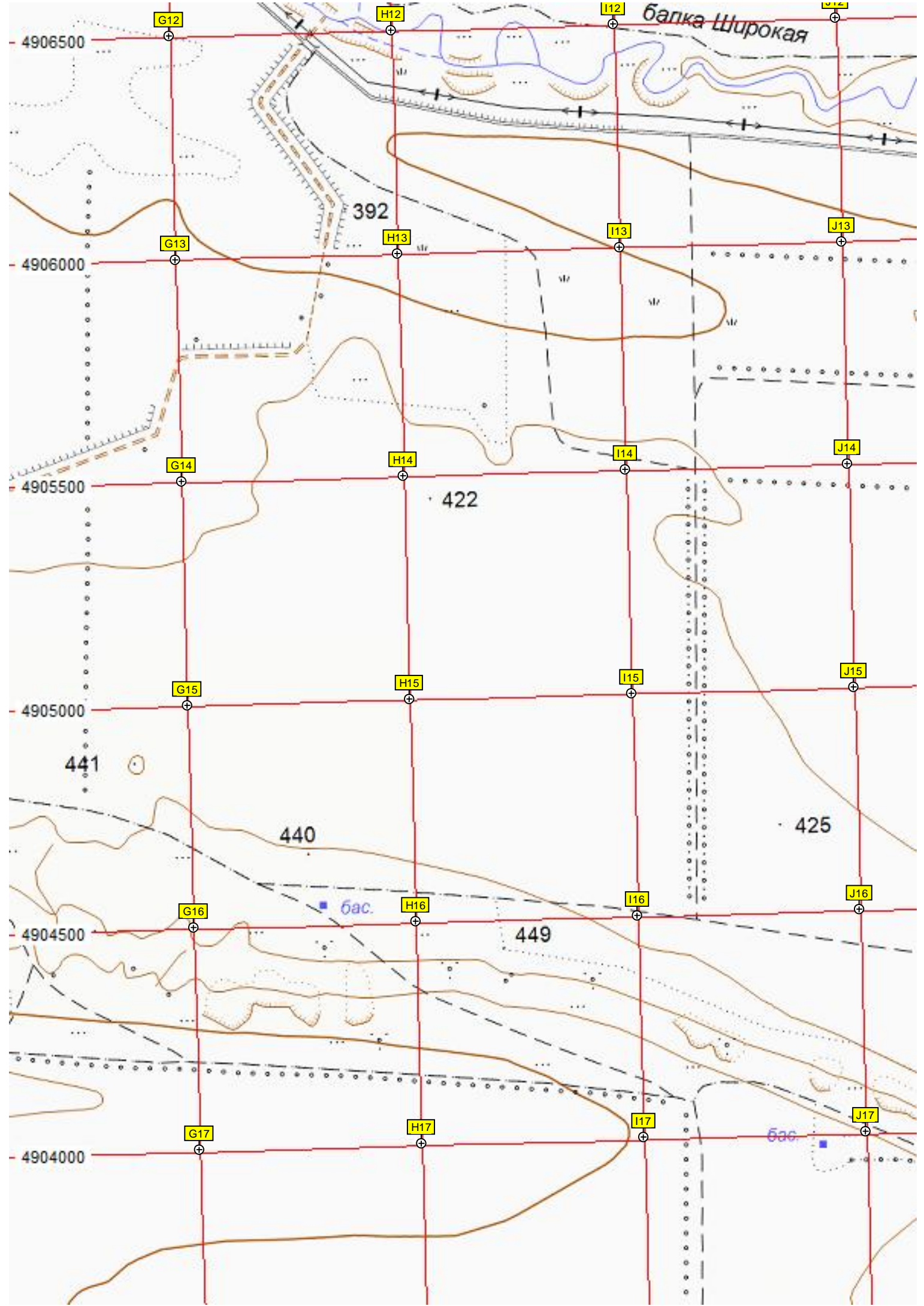
M12

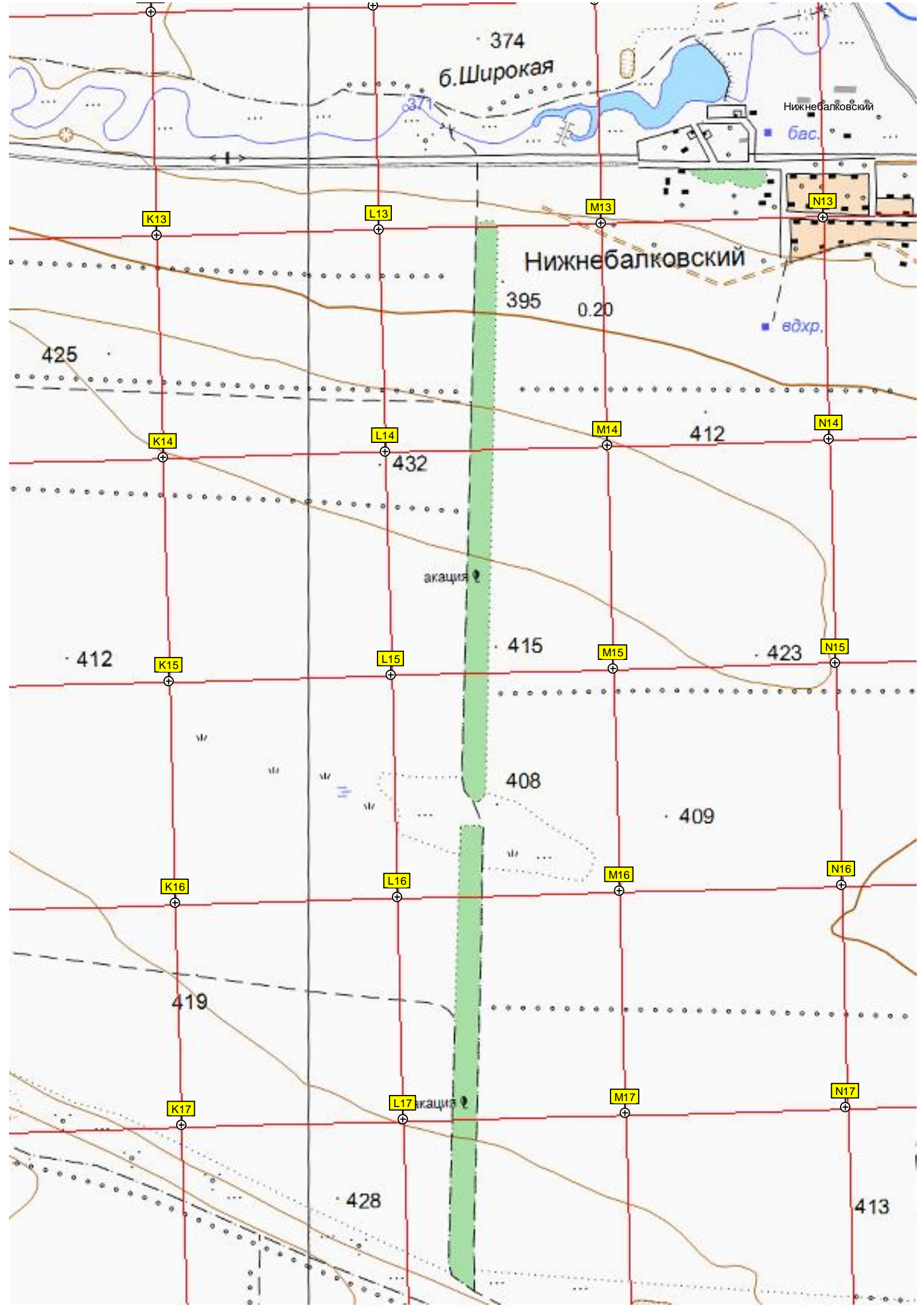
N12

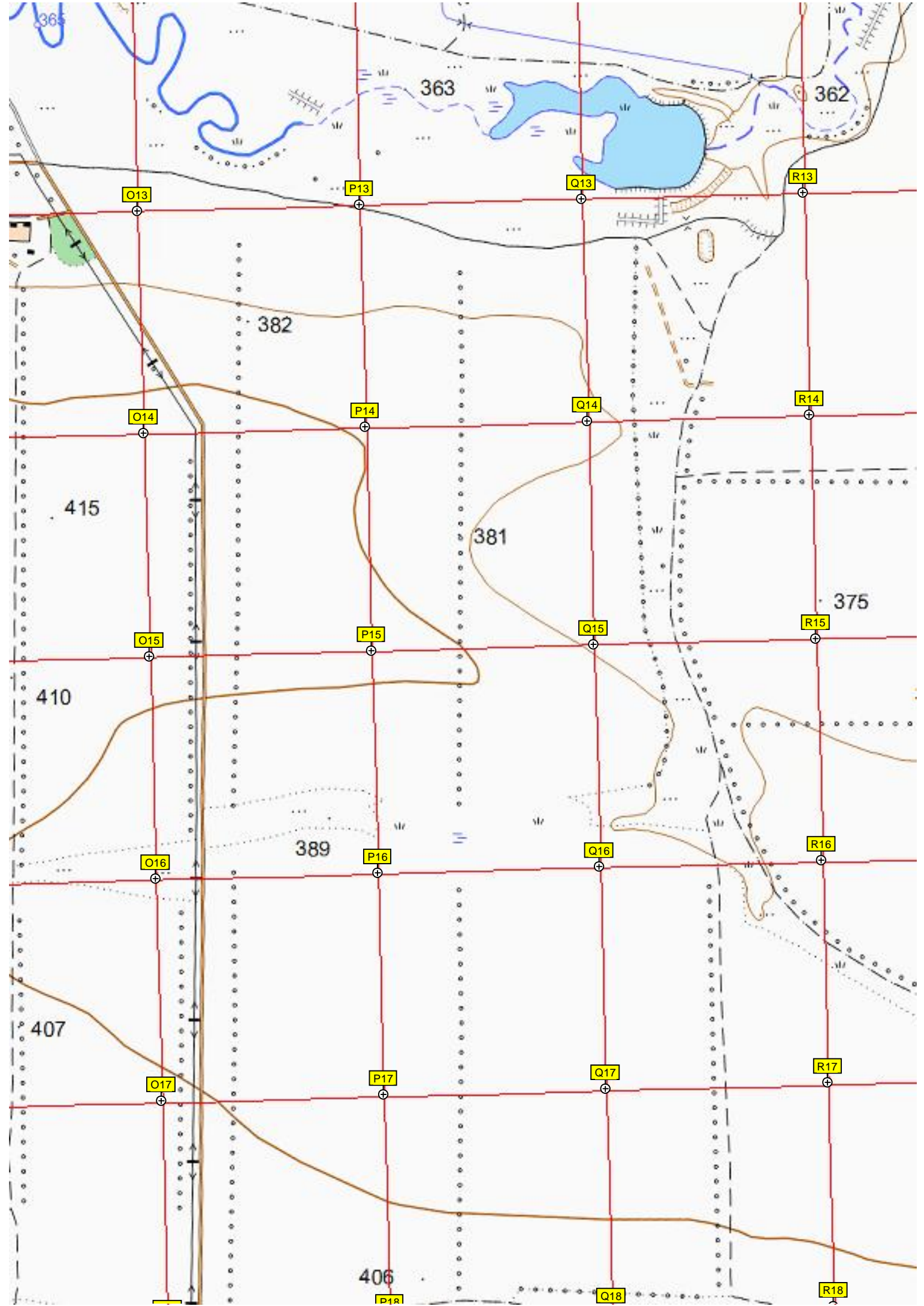


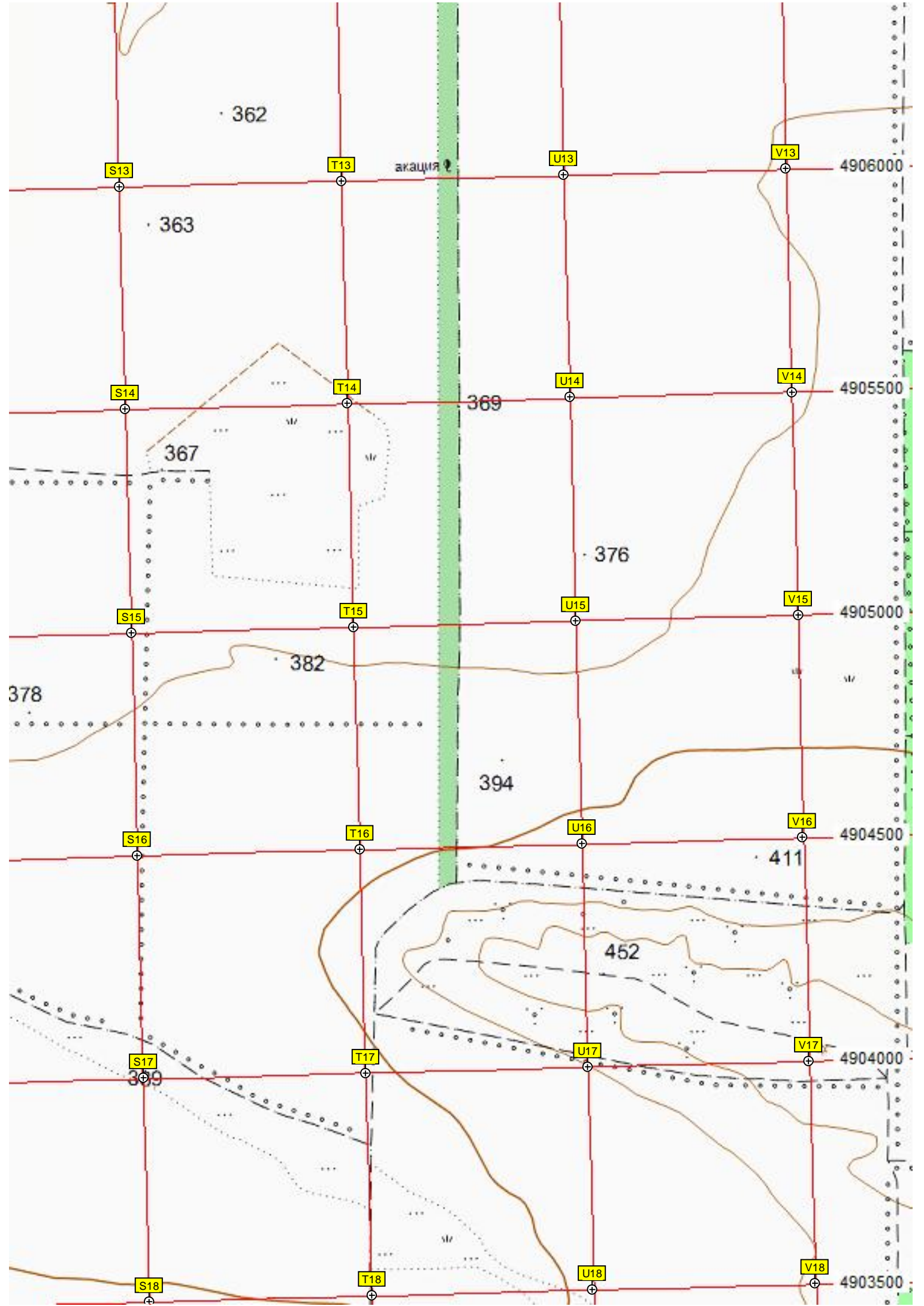




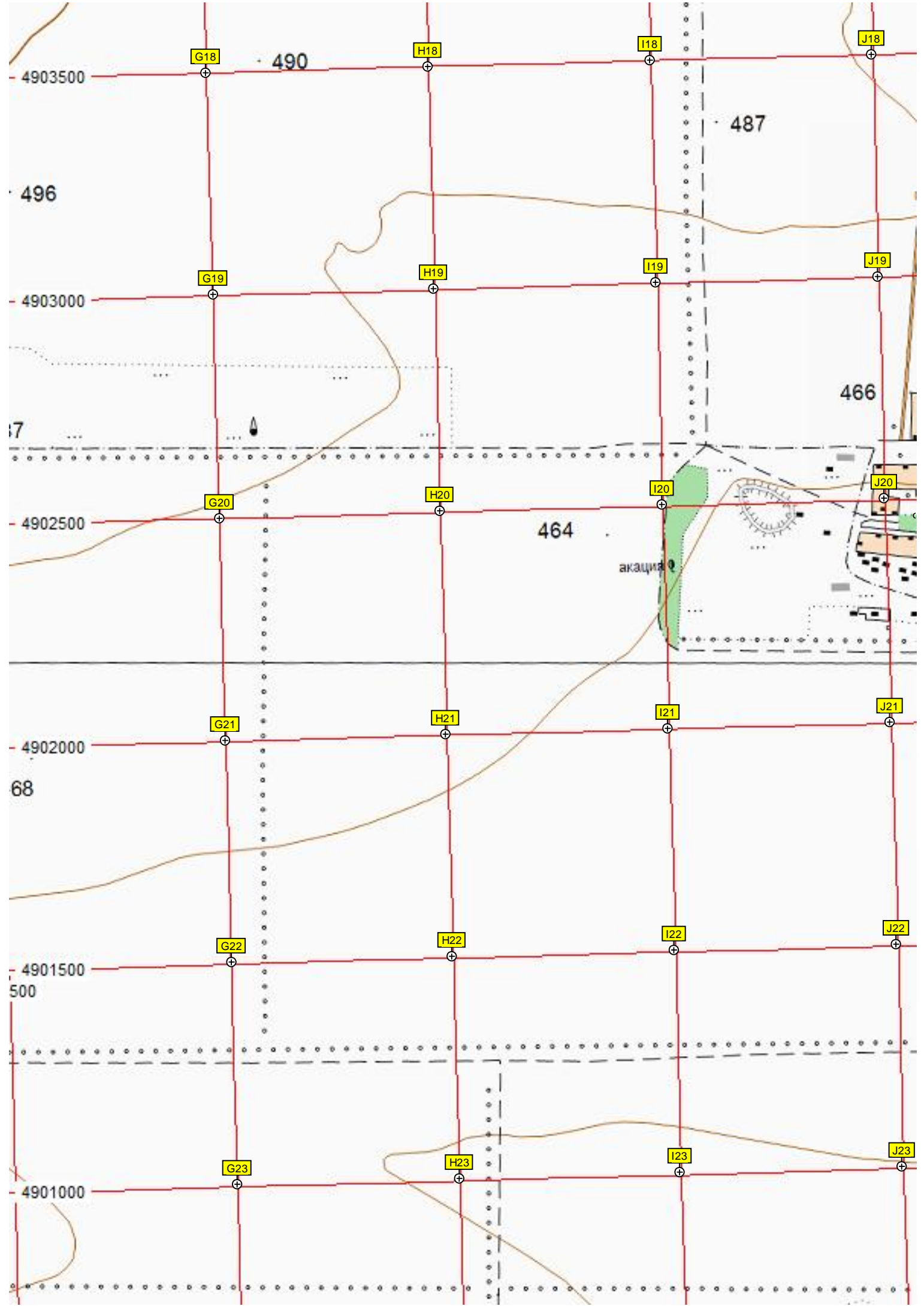


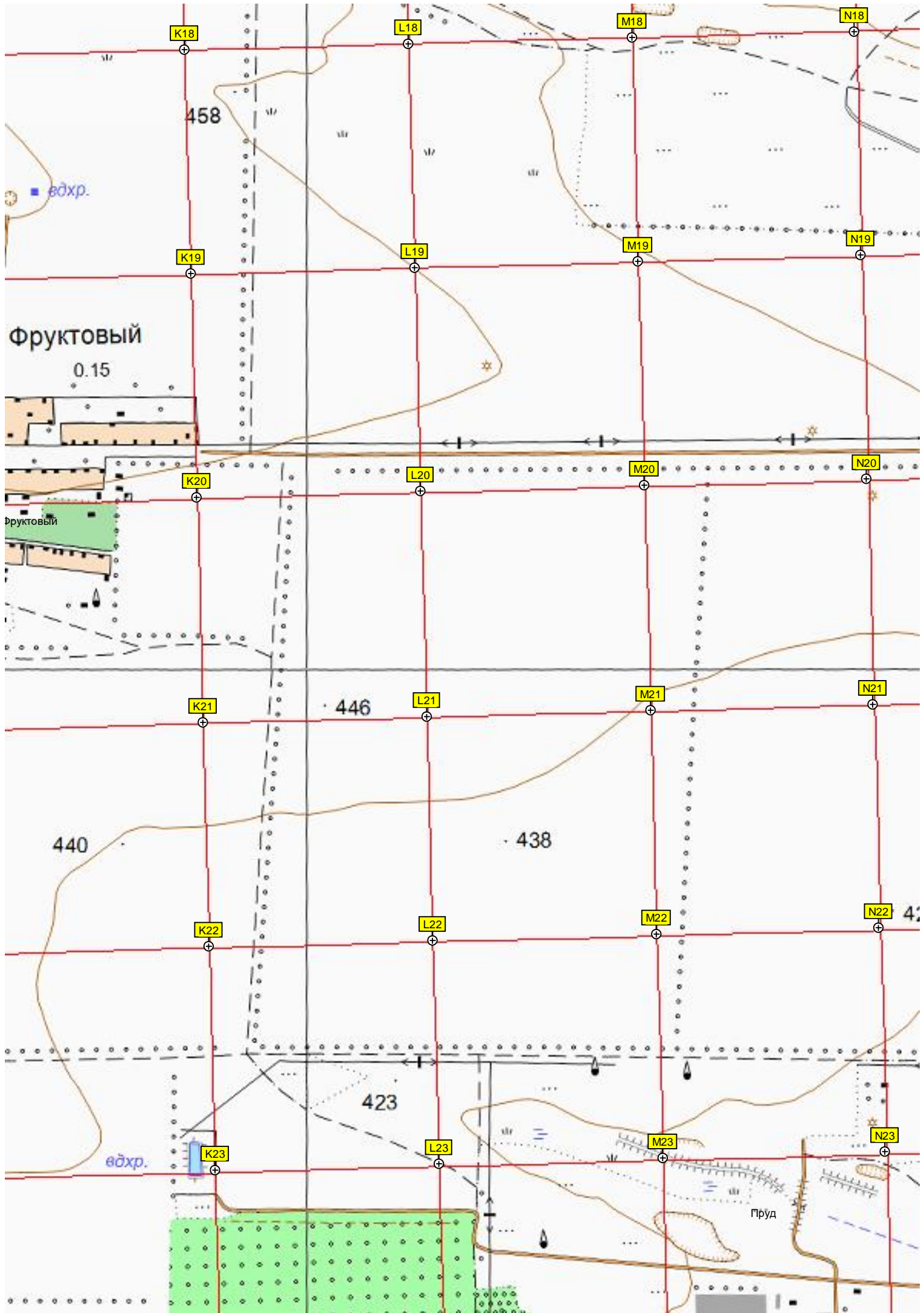


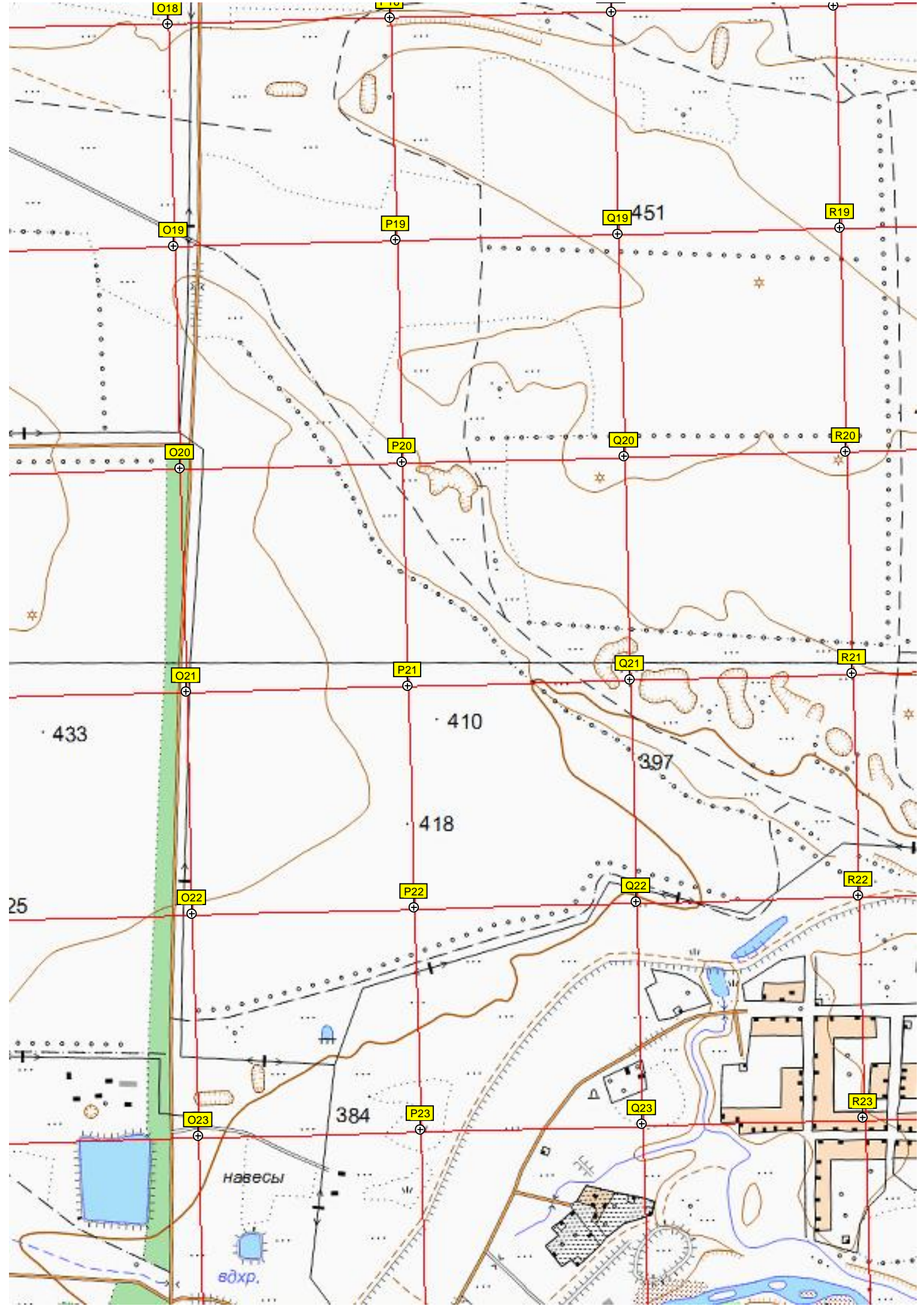












O18

P18

Q18

R18

O19

P19

Q19

R19

451

O20

P20

Q20

R20

O21

P21

Q21

R21

433

410

397

418

O22

P22

Q22

R22

25

O23

P23

Q23

R23

384

навесы

вдхр.



S19

T19

U19

V19

S20

T20

U20

V20

S21

T21

U21

V21

S22

T22

U22

V22

S23

T23

U23

V23

Сунжа

