

674500

674000

673500

673000

672500

672000

671500

5784000

5783500

5783000

5782500

Балка Зерин Лог

Урочище Липовый Лог

Балка Крутые Лога

Опора ЛЭП

Опора ЛЭП

Опора ЛЭП

Опора ЛЭП

Опора ЛЭП

Опора ЛЭП

Опора ЛЭП

Опора ЛЭП

Опора ЛЭП

A2

B2

C2

D2

E2

F2

A3

B3

C3

D3

E3

F3

A4

B4

C4

D4

E4

F4

A5

B5

C5

D5

E5

F5

A6

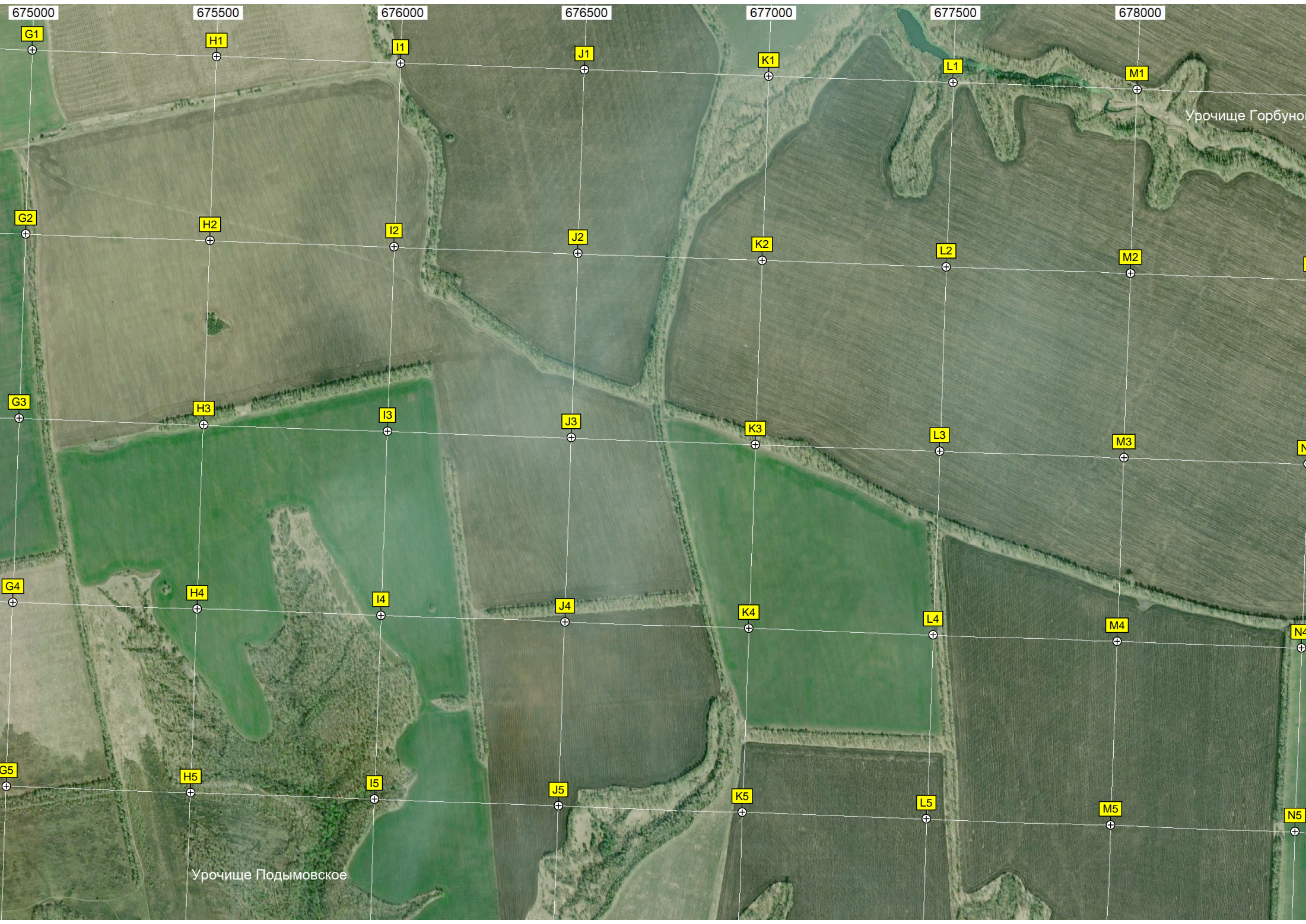
B6

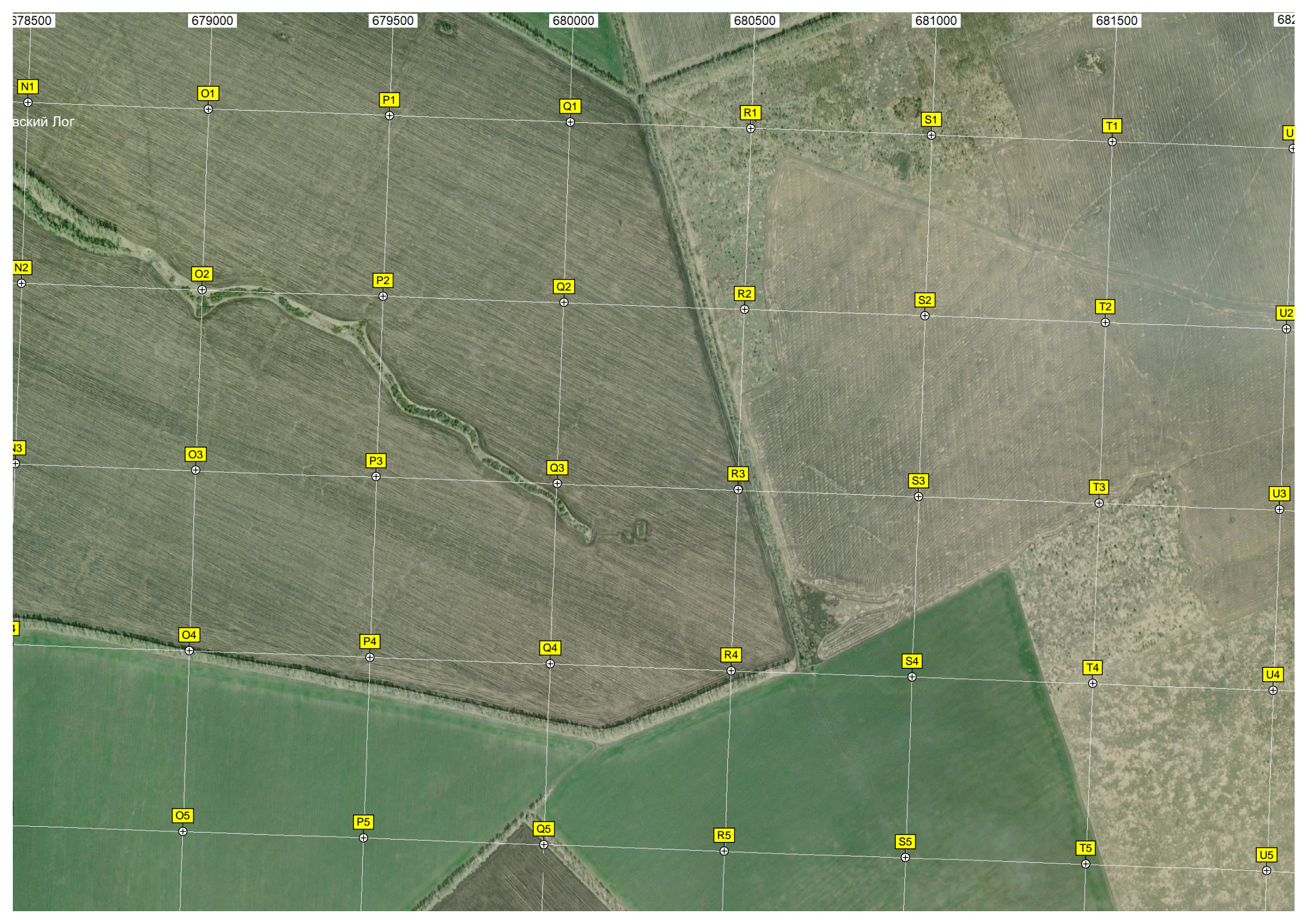
C6

D6

E6

F6





578500

679000

679500

680000

680500

681000

681500

682000

N1

O1

P1

Q1

R1

S1

T1

U1

N2

O2

P2

Q2

R2

S2

T2

U2

N3

O3

P3

Q3

R3

S3

T3

U3

N4

O4

P4

Q4

R4

S4

T4

U4

O5

P5

Q5

R5

S5

T5

U5

вский Лог

2000

682

1

5784500

5784000

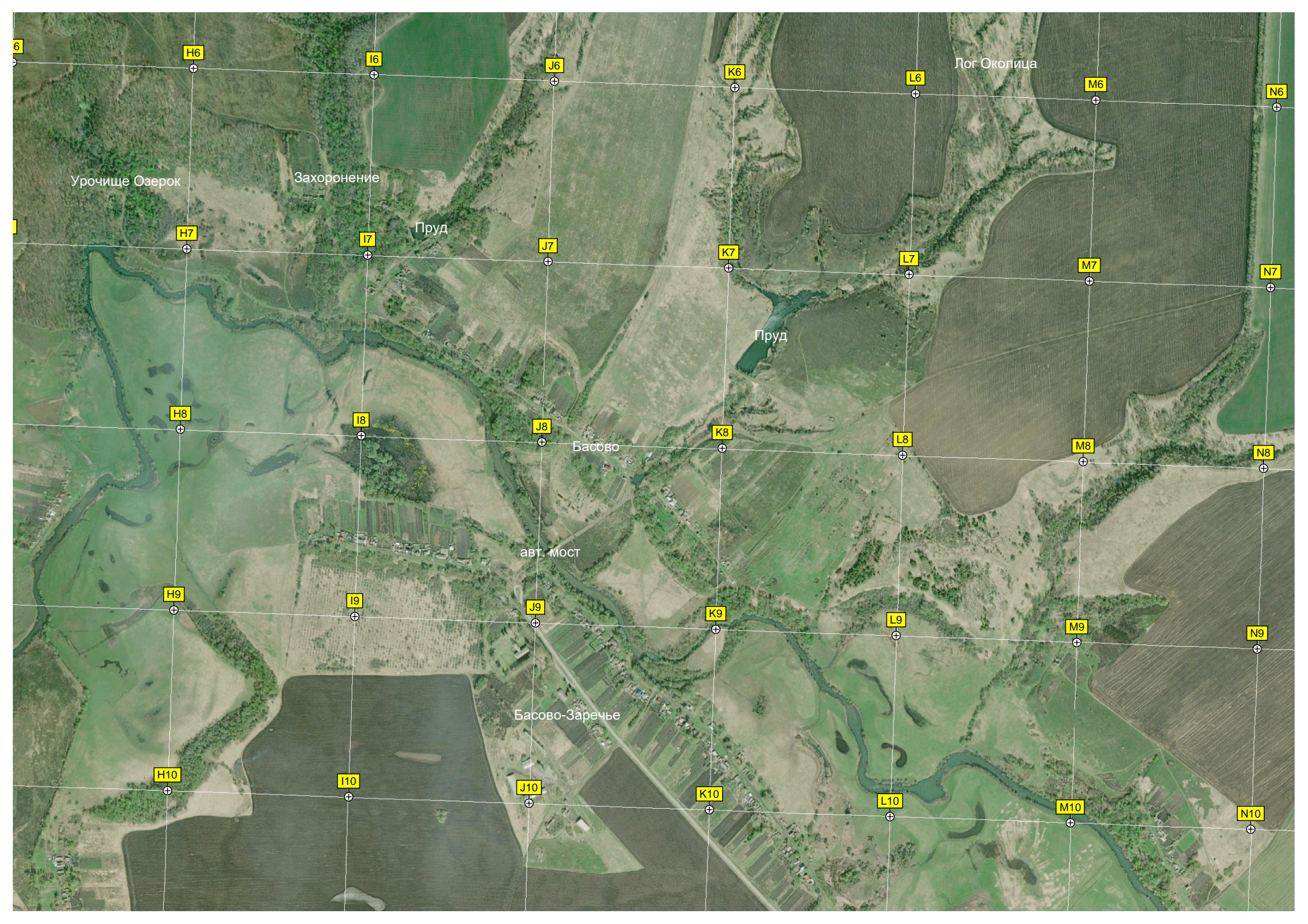
5783500

5783000

5782500







H6

I6

J6

K6

L6

Лог Околица

M6

N6

Урочище Озерок

Захоронение

Пруд

H7

I7

J7

K7

L7

M7

N7

Пруд

H8

I8

J8

K8

L8

Басово

M8

N8

авт. мост

H9

I9

J9

K9

L9

M9

N9

Басово-Заречье

H10

I10

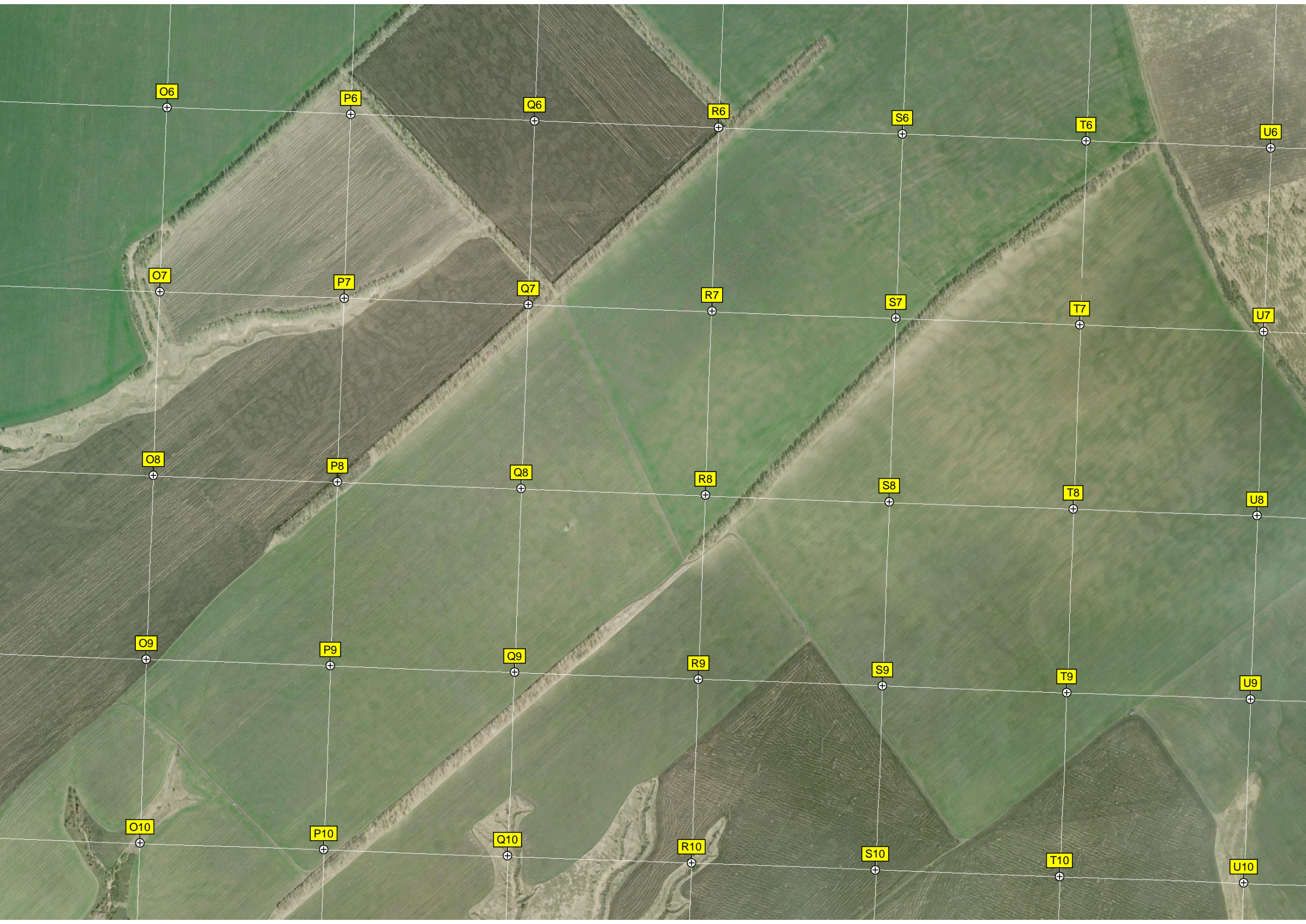
J10

K10

L10

M10

N10



O6

P6

Q6

R6

S6

T6

U6

O7

P7

Q7

R7

S7

T7

U7

O8

P8

Q8

R8

S8

T8

U8

O9

P9

Q9

R9

S9

T9

U9

O10

P10

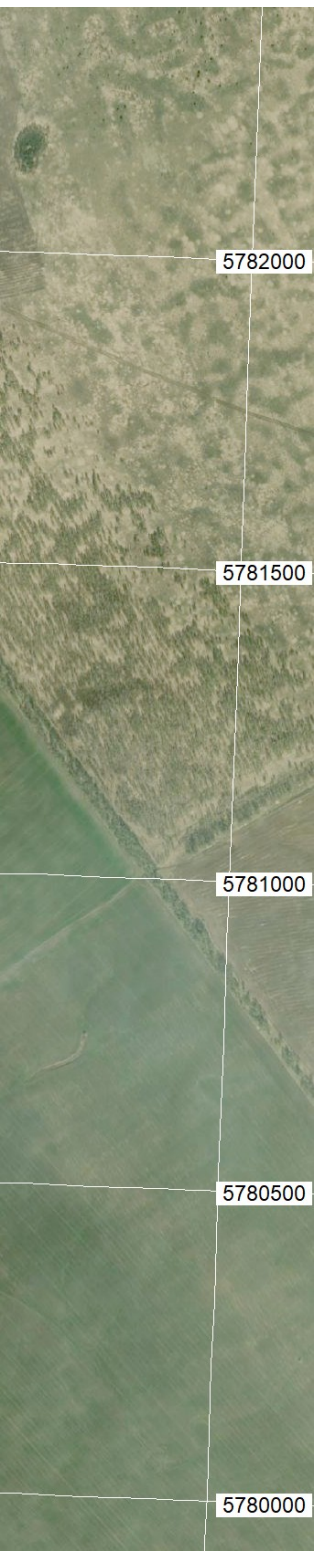
Q10

R10

S10

T10

U10

An aerial photograph of a rural landscape, oriented vertically. A white vertical line runs down the center of the image, with numerical labels placed to its right. The landscape is divided into several sections by horizontal white lines. The top section is a light brownish-green field. The middle section is a darker green field with a dense line of trees or a fence running diagonally across it. The bottom section is a dark green field. The labels are: 5782000, 5781500, 5781000, 5780500, and 5780000.

5782000

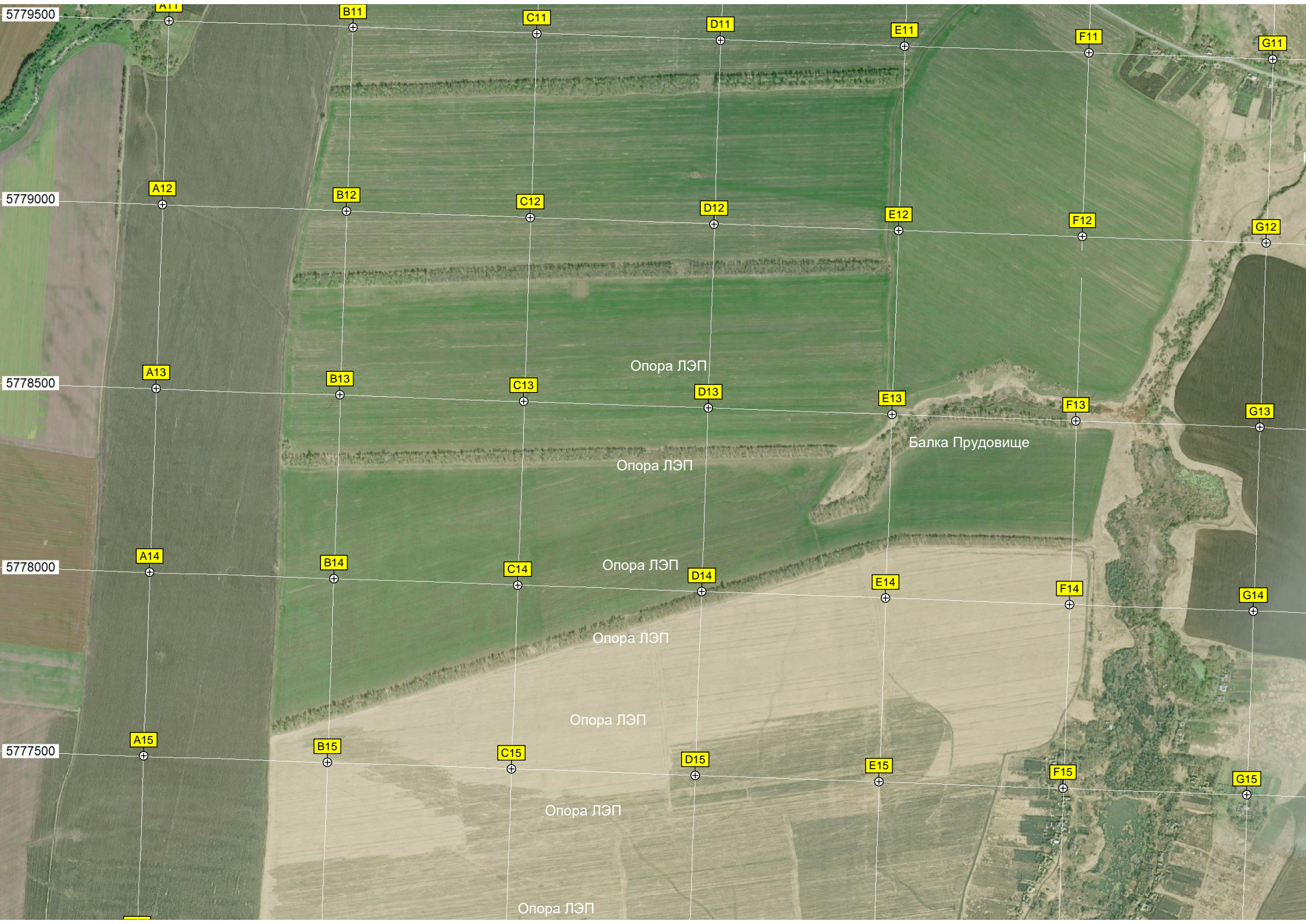
5781500

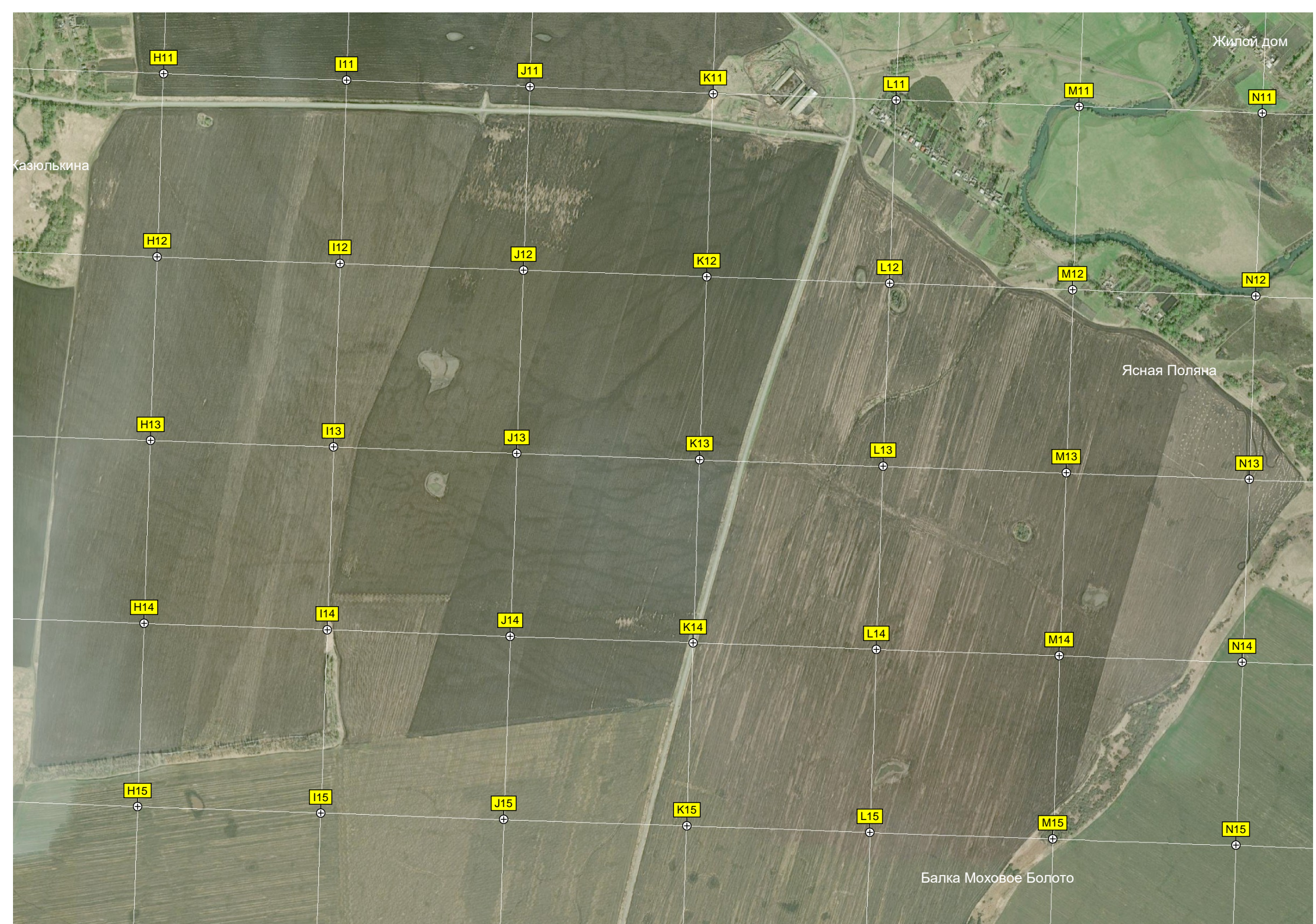
5781000

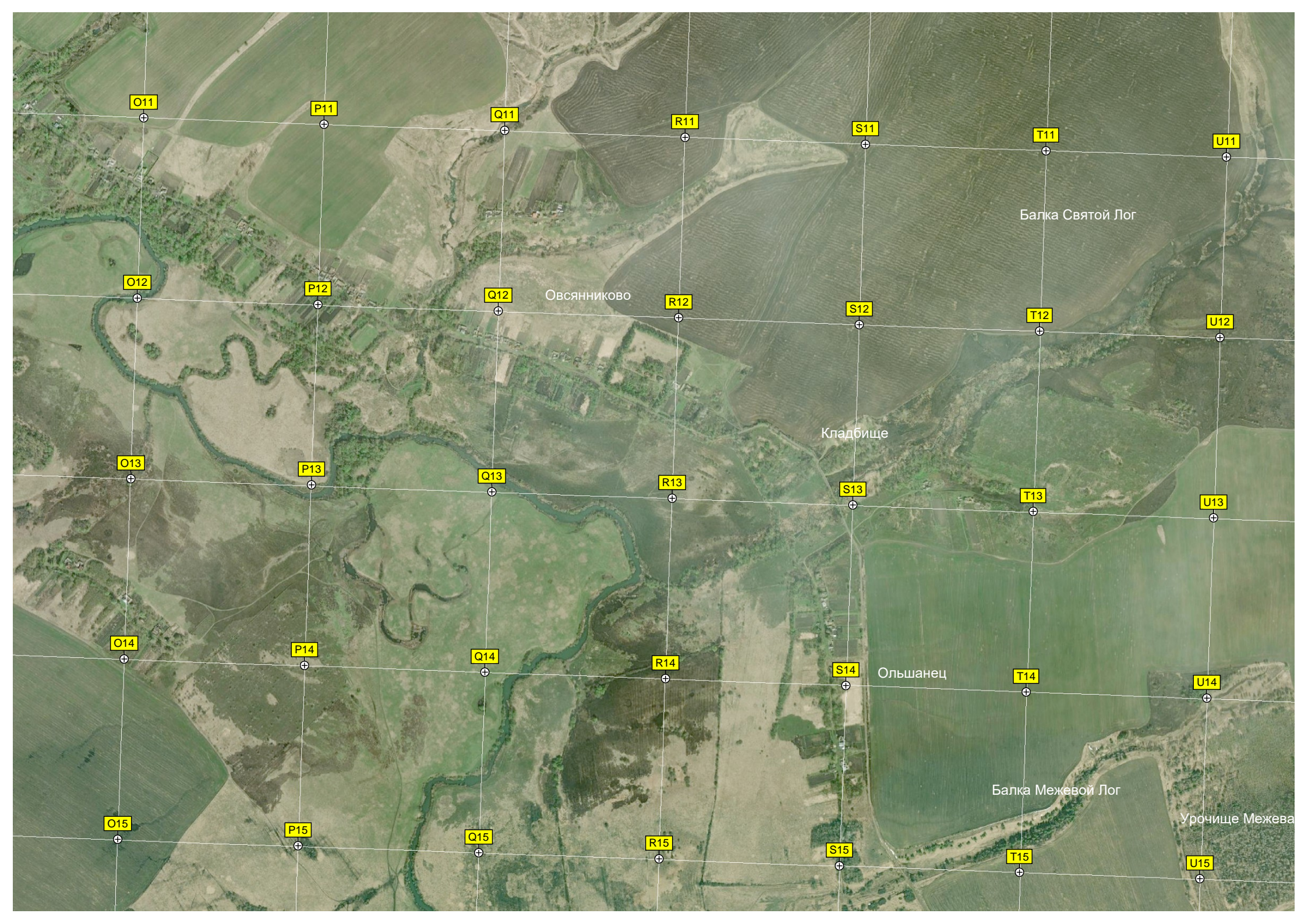
5780500

5780000









O11

P11

Q11

R11

S11

T11

U11

O12

P12

Q12

Овсянниково

R12

S12

T12

U12

Балка Святой Лог

O13

P13

Q13

Кладбище

R13

S13

T13

U13

O14

P14

Q14

R14

S14

Ольшанец

T14

U14

Балка Межевой Лог

O15

P15

Q15


R15

S15

T15

U15

Урочище Межева

An aerial photograph of agricultural fields, oriented vertically. A white vertical line runs through the center of the image. The fields are divided into several sections. The top section is green. Below it is a section with a mix of green and brown, containing a large, irregularly shaped area of brownish soil or a field. Below that is a section with a mix of green and brown. The bottom section is mostly green. The numerical labels are placed to the right of the vertical line, and the text 'я Роща' is at the bottom left.

5779500

5779000

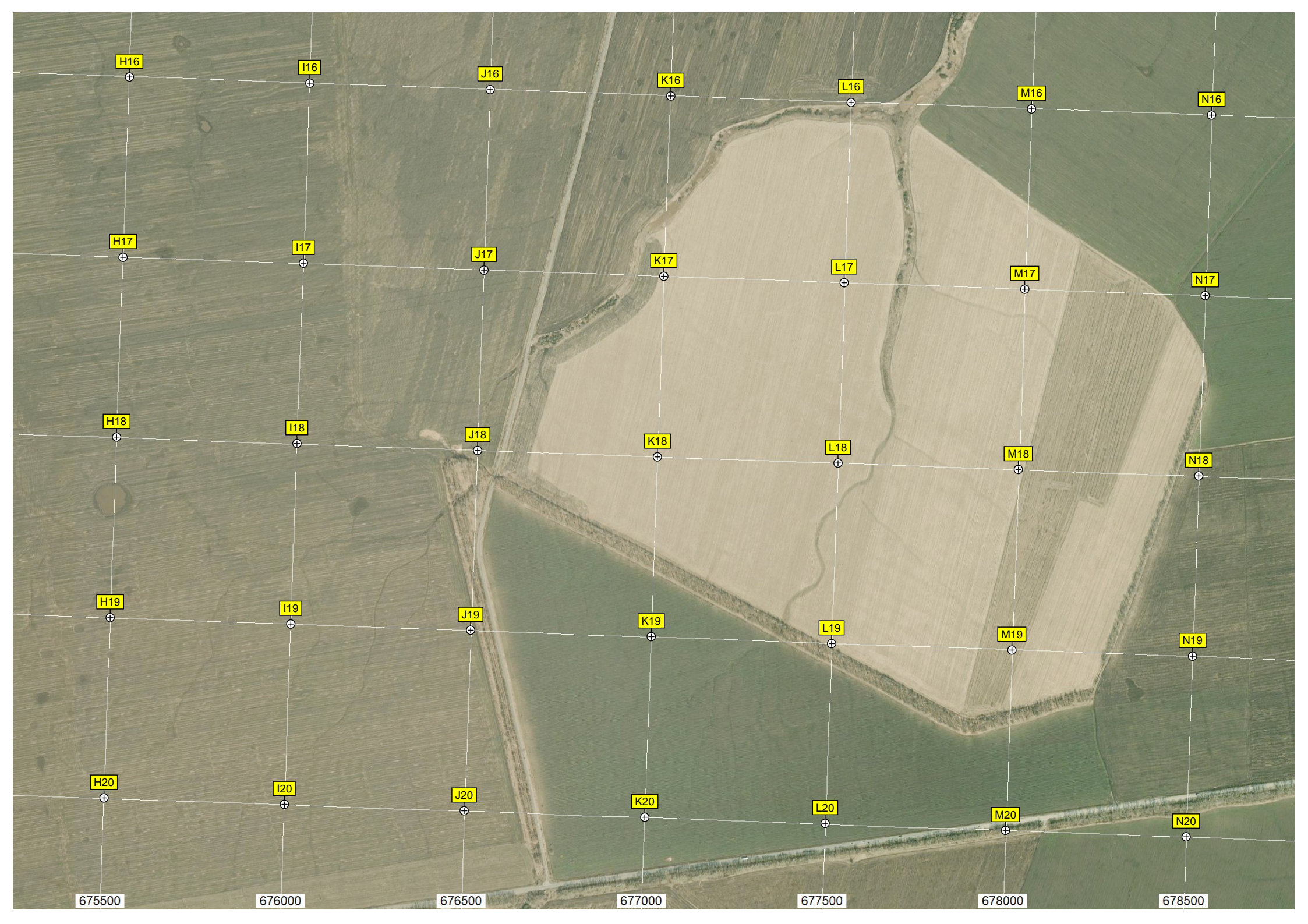
5778500

5778000

5777500

я Роща





H16

I16

J16

K16

L16

M16

N16

H17

I17

J17

K17

L17

M17

N17

H18

I18

J18

K18

L18

M18

N18

H19

I19

J19

K19

L19

M19

N19

H20

I20

J20

K20

L20

M20

N20

675500

676000

676500

677000

677500

678000

678500



Школьный пруд

Валун

Ленина

Заречье

Верхнее Жданово

O16

P16

Q16

R16

S16

T16

U16

O17

P17

Q17

R17

S17

T17

U17

O18

P18

Q18

R18

S18

T18

U18

O19

P19

Q19

R19

S19

T19

U19

O20

P20

Q20

R20

S20

T20

U20

679000

679500

680000

680500

681000

681500

682000



5777000

5776500

Пруд

5776000

5775500

682500

5775000