

486000

486500

487000

487500

488000

488500

489000

ст. Лерекач.

88 бур.

нефт.

нефт.

V1

W1

X1

Y1

Z1

V2

W2

X2

Y2

Z2

V3

W3

X3

Y3

Z3

V4

W4

X4

Y4

Z4

V5

W5

X5

Y5

Z5

V6

W6

X6

Y6

Z6

V7

W7

X7

Y7

Z7

V8

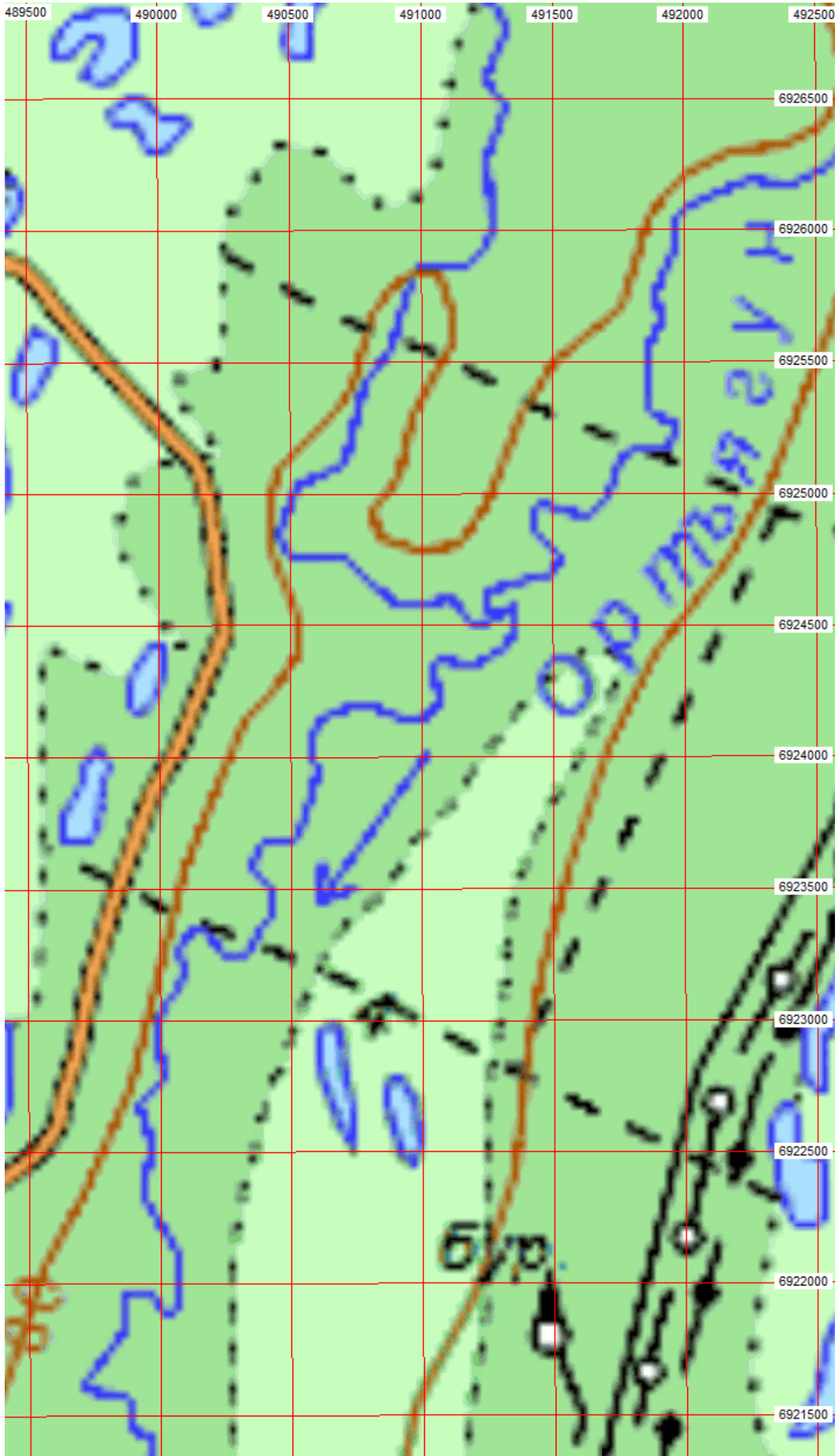
W8

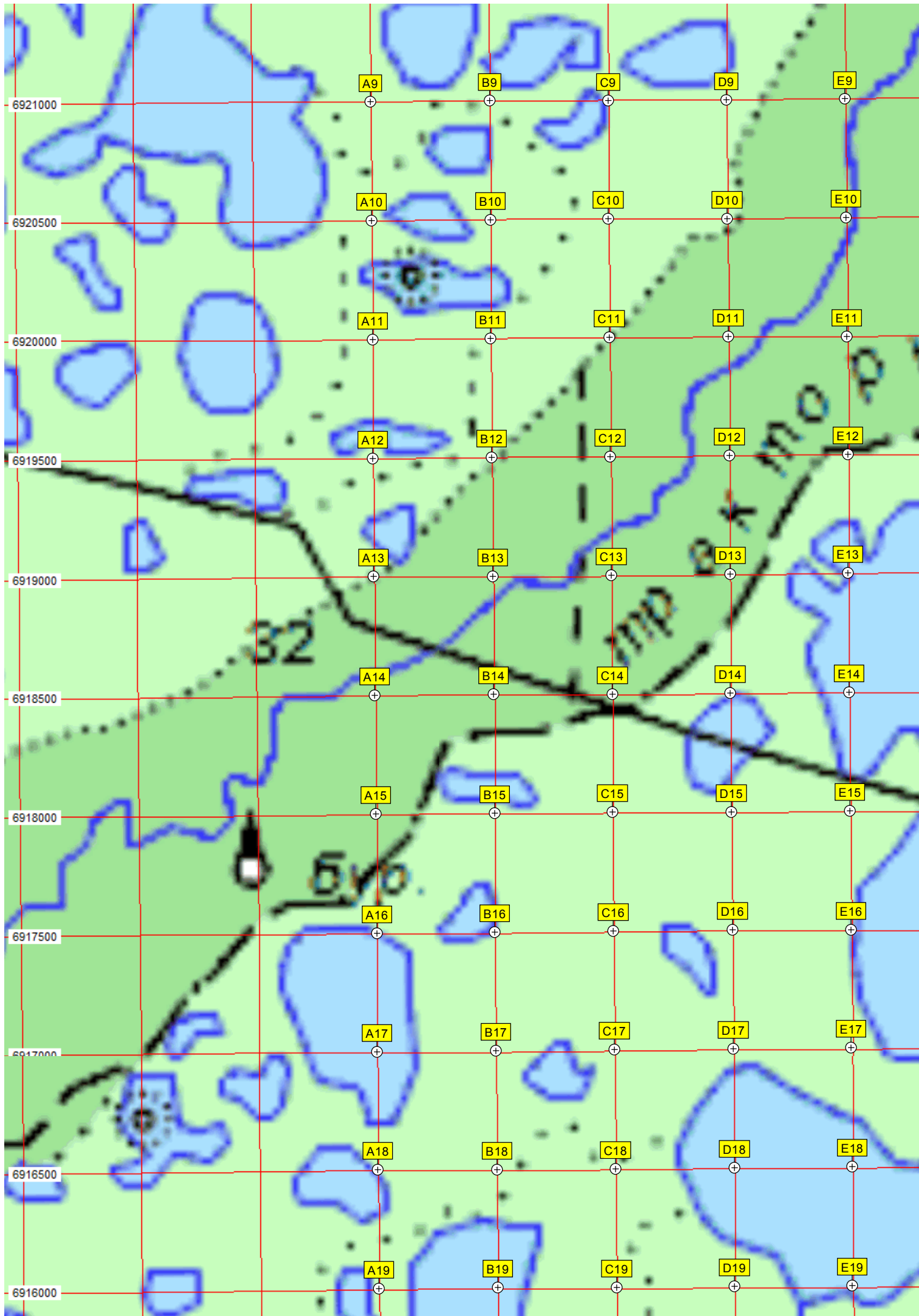
X8

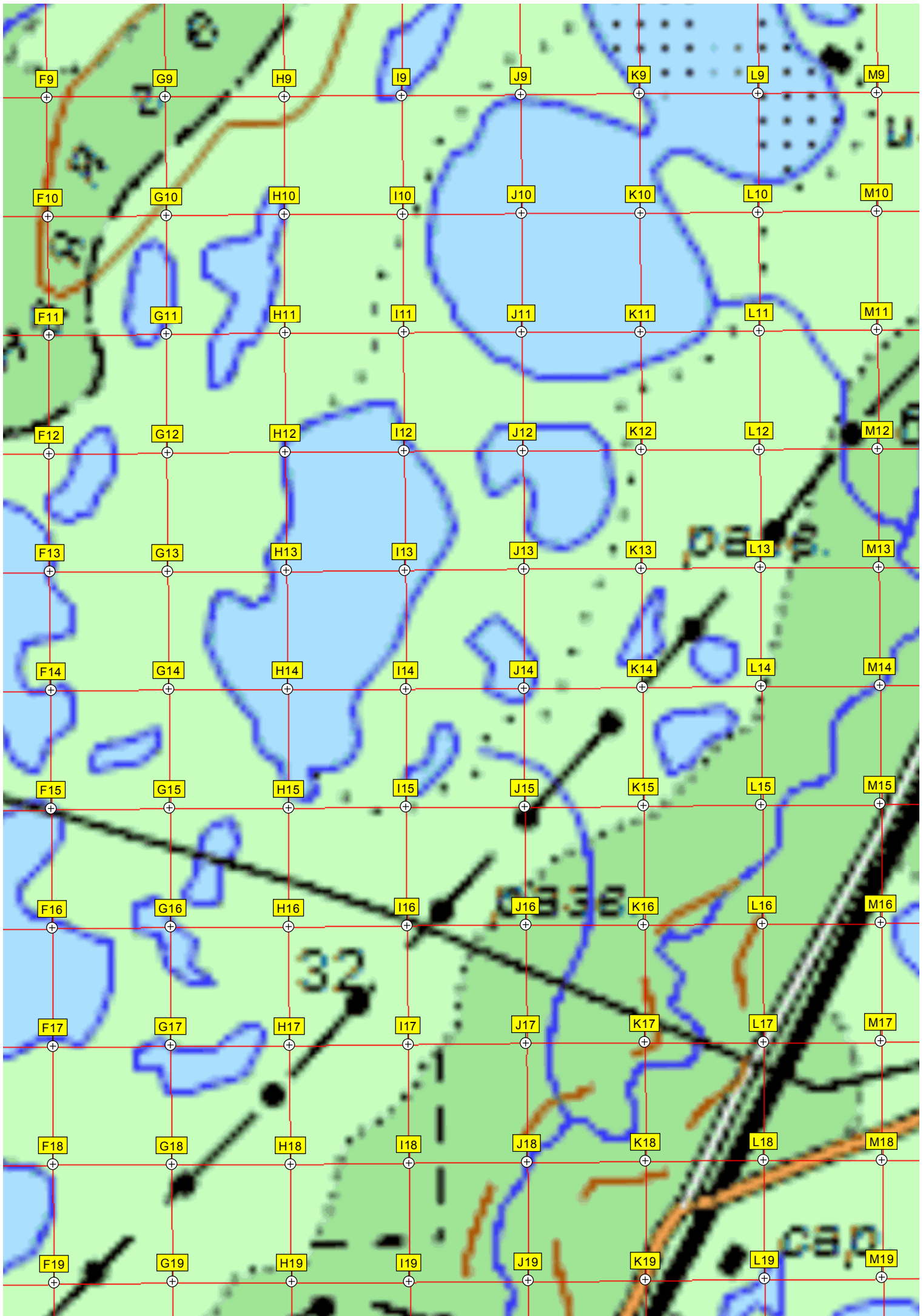
Y8

Z8

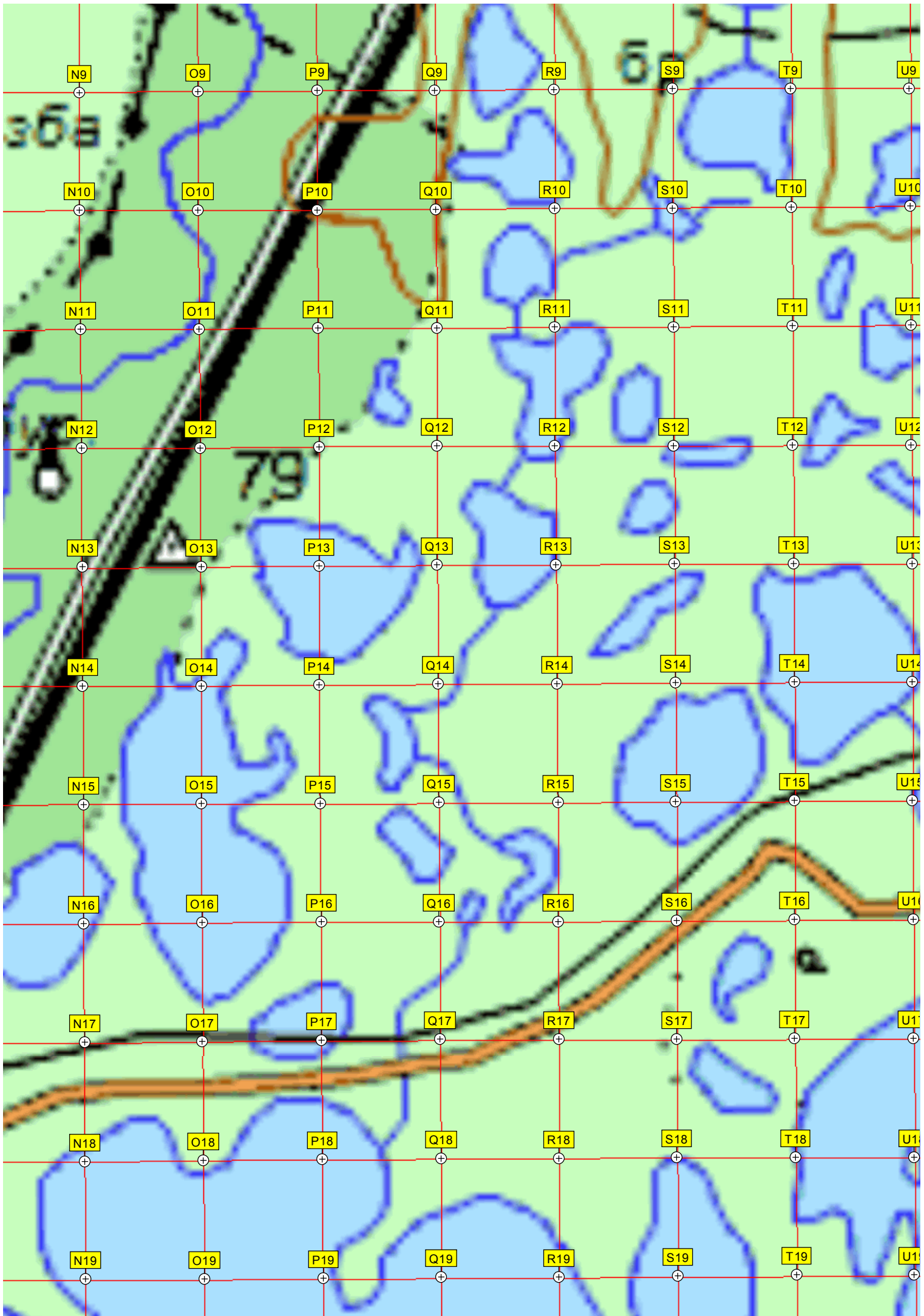




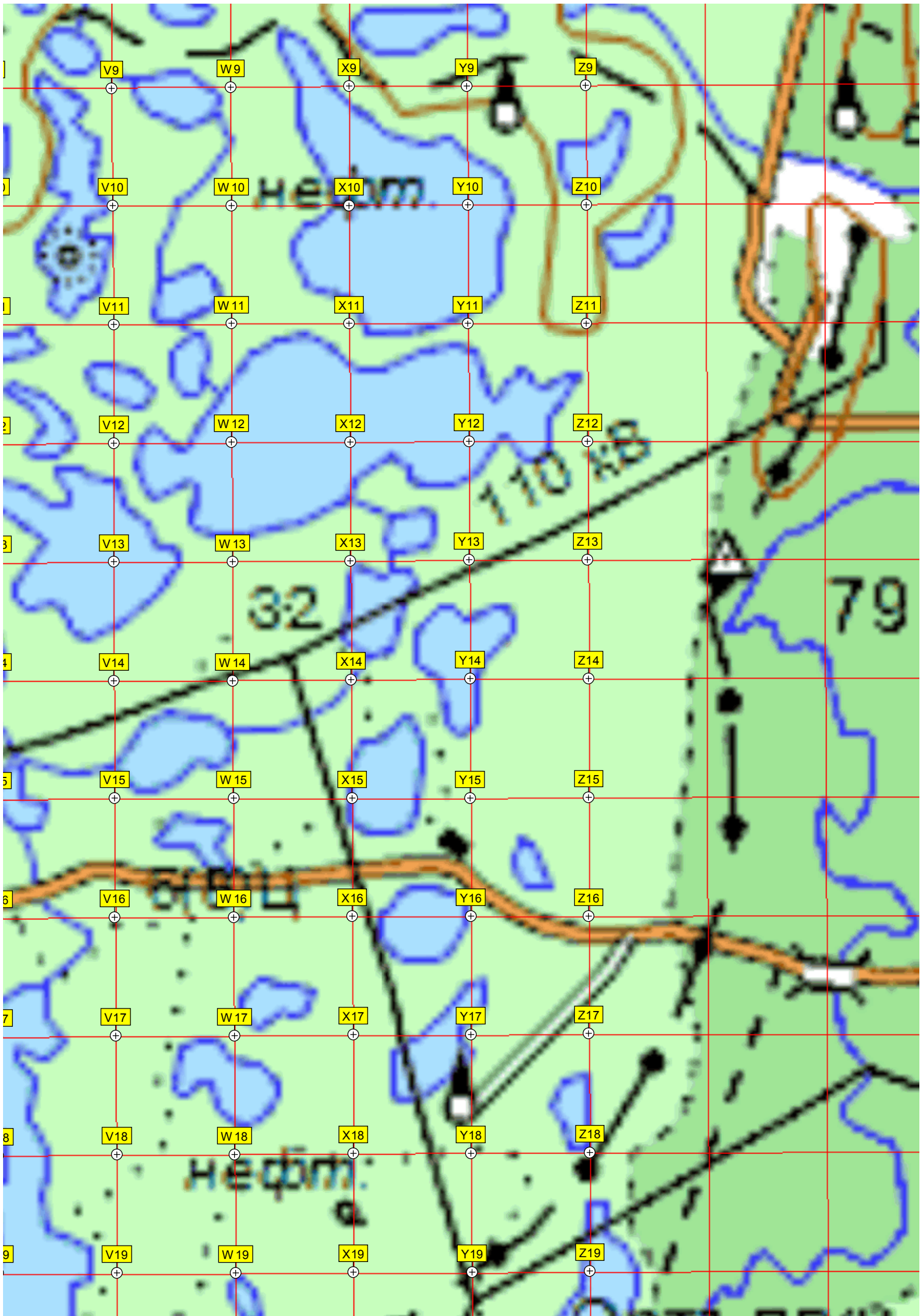


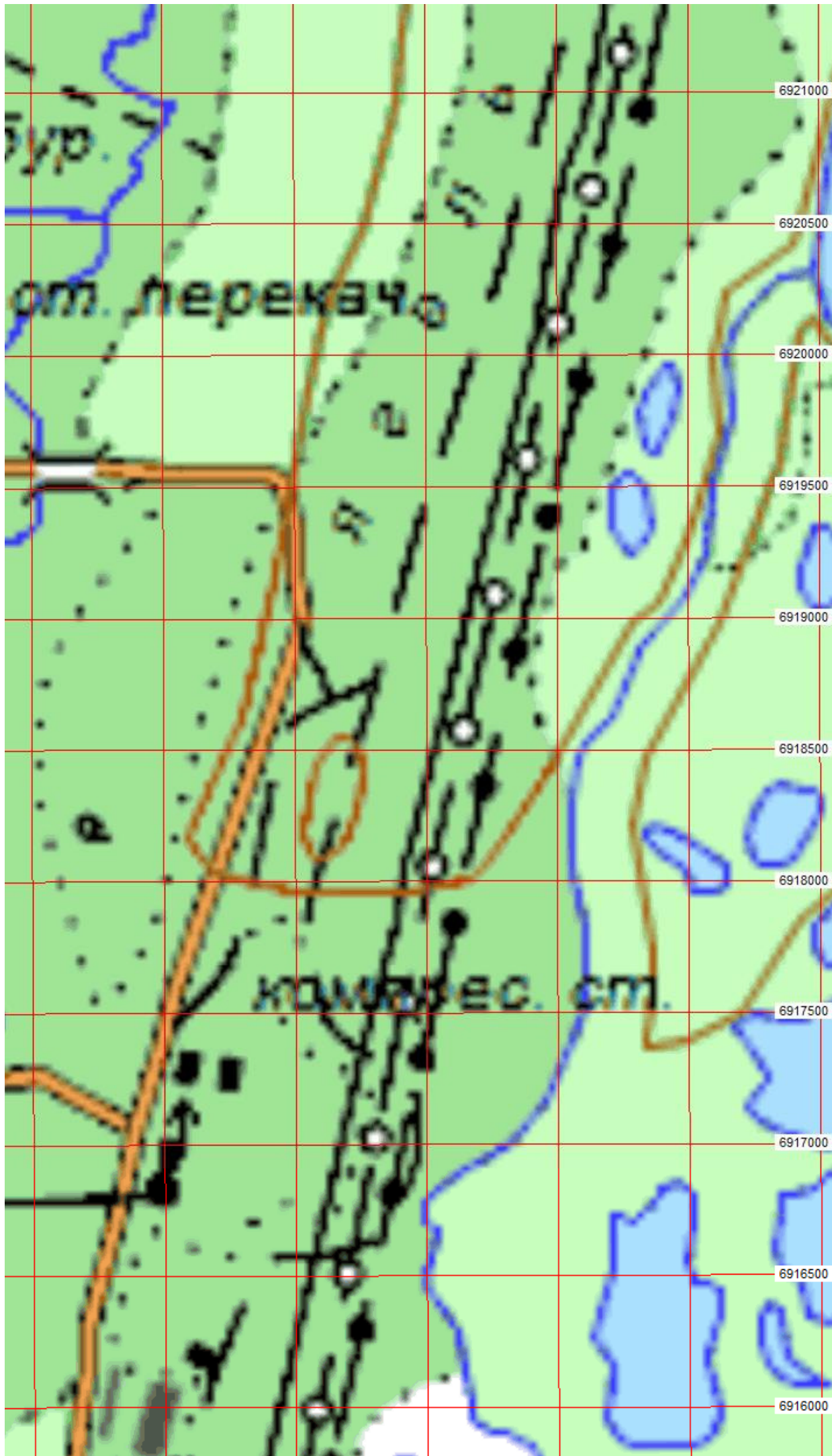




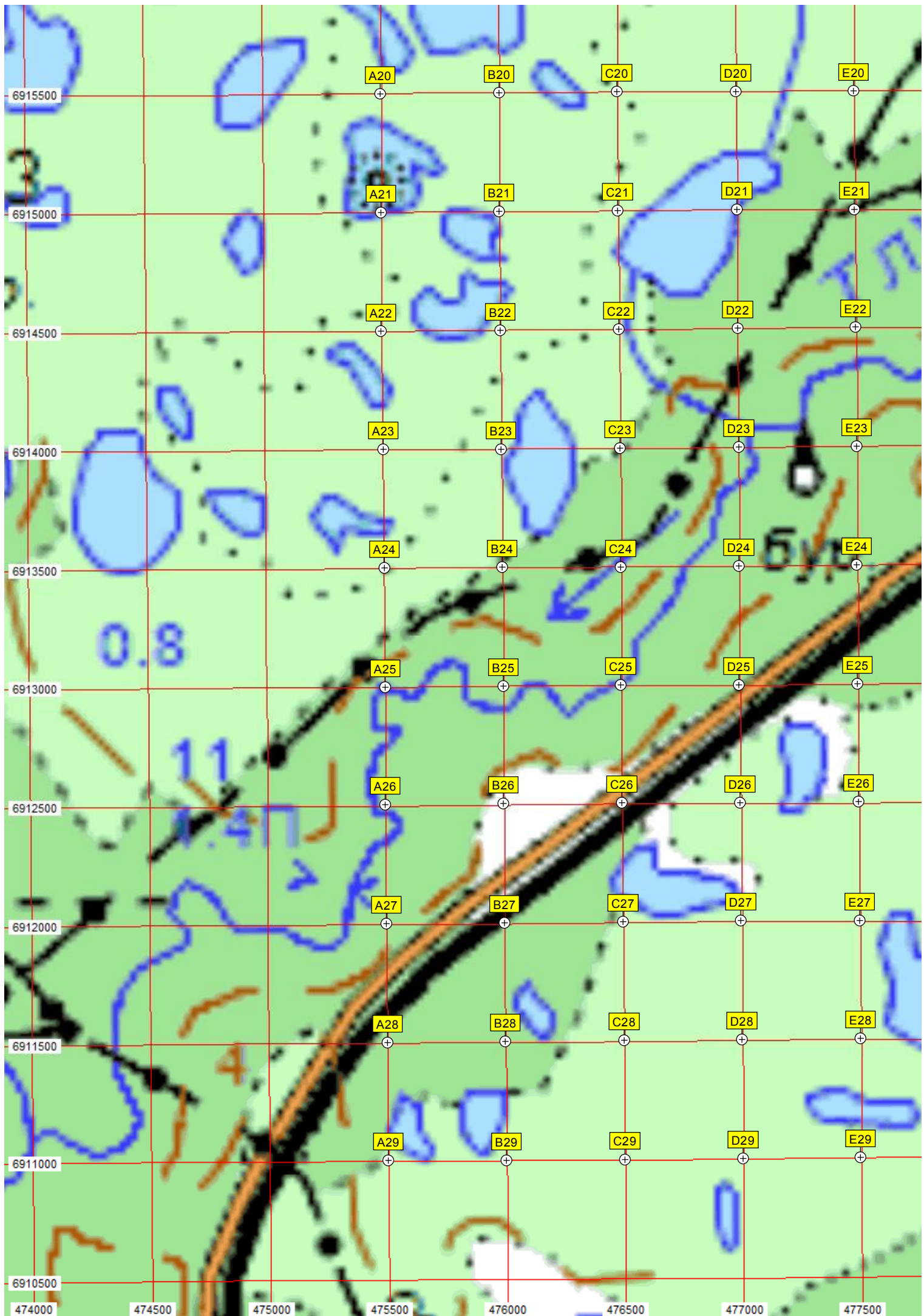


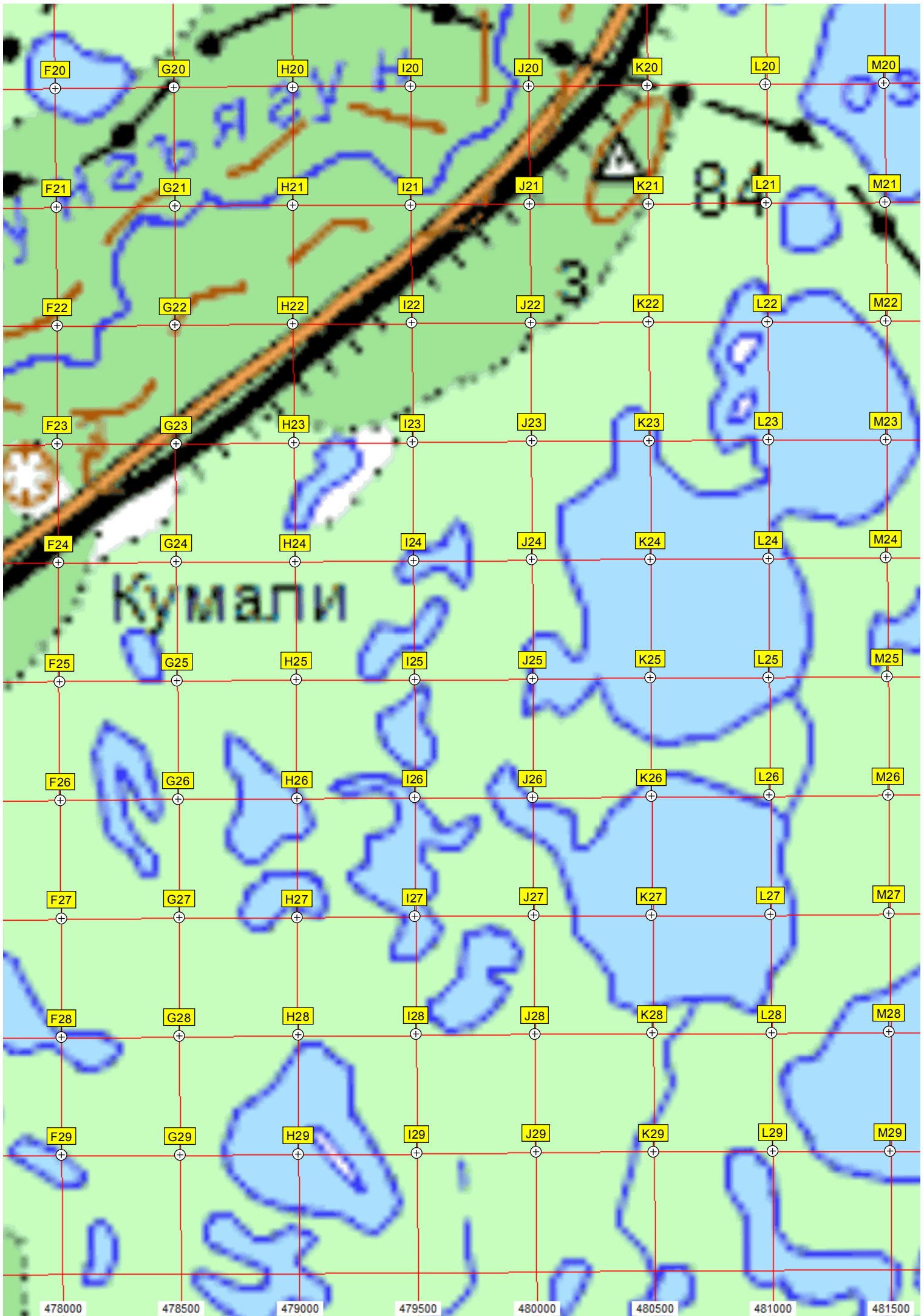




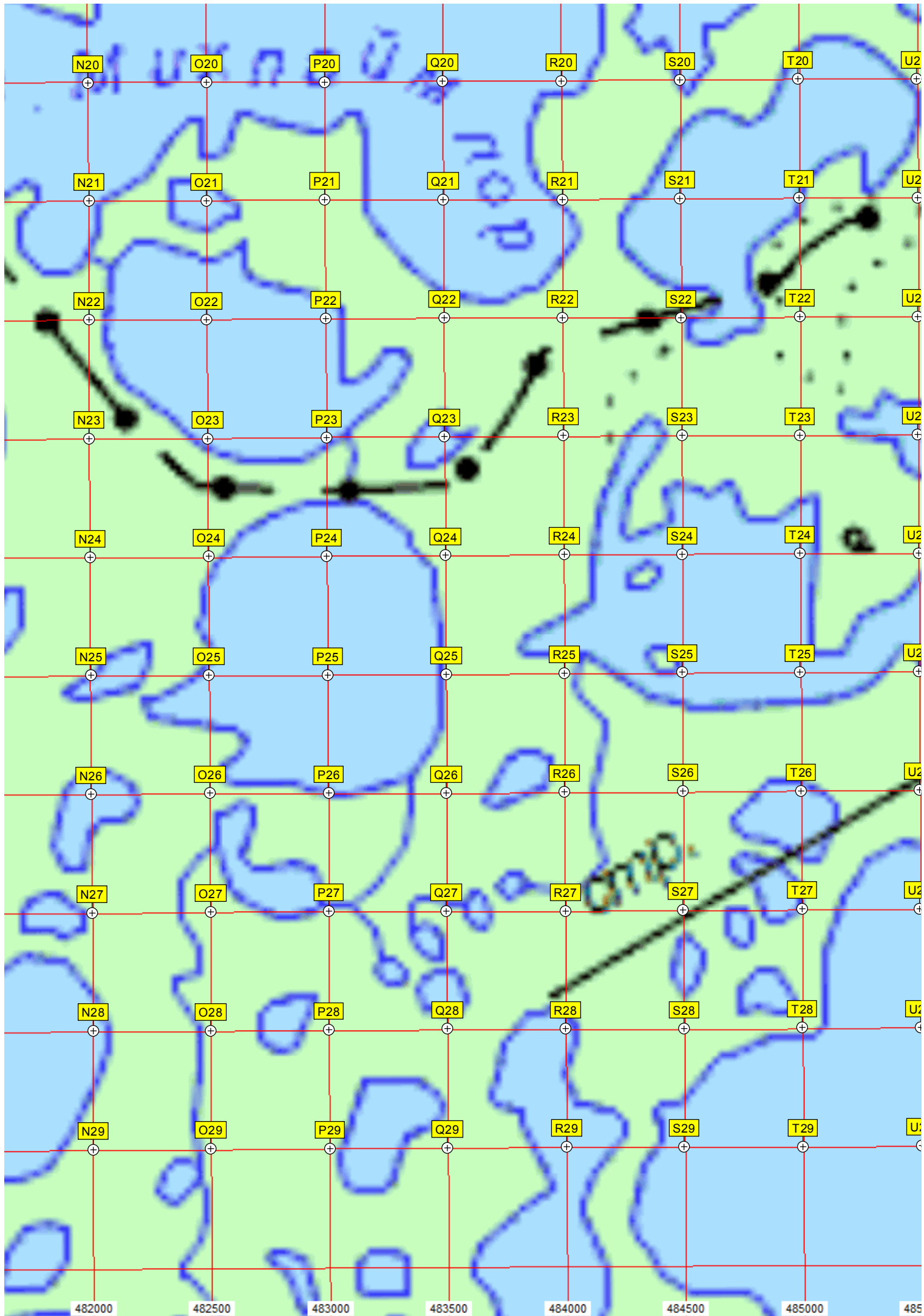


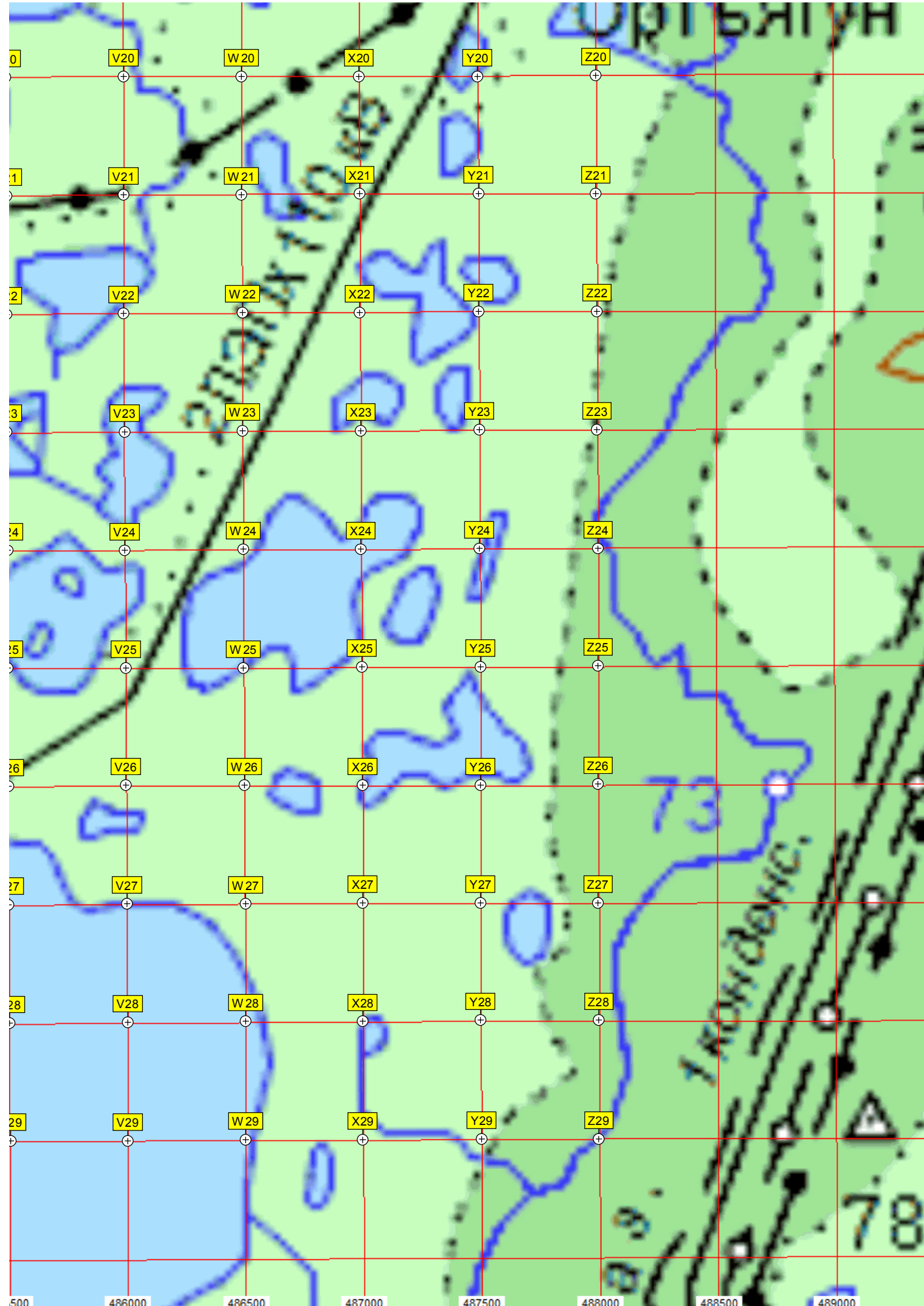












500 486000 486500 487000 487500 488000 488500 489000



