

550000

68

551000

552000

553000

554000

5022000

66

66

63

67

67

70

69

AE1

AF1

AG1

AH1

AI1

AJ1

AK1

AL1

AM1

AN1

5021000

AE2

AF2

AG2

AH2

AI2

AJ2

AK2

AL2

AM2

AN2

70

67

67

70

73

70

72

74

P-253

AE3

AF3

AG3

AH3

AI3

AJ3

AK3

AL3

AM3

AN3

5020000

AE4

AF4

AG4

AH4

AI4

AJ4

AK4

AL4

AM4

AN4

Октябрьский

0.44

Курпили (Новая)

70

69

73

73

72

75

73

AE5

AF5

AG5

AH5

AI5

AJ5

AK5

AL5

AM5

AN5

5019000

AE6

AF6

AG6

AH6

AI6

AJ6

AK6

AL6

AM6

AN6

72

71

72

73

72

69

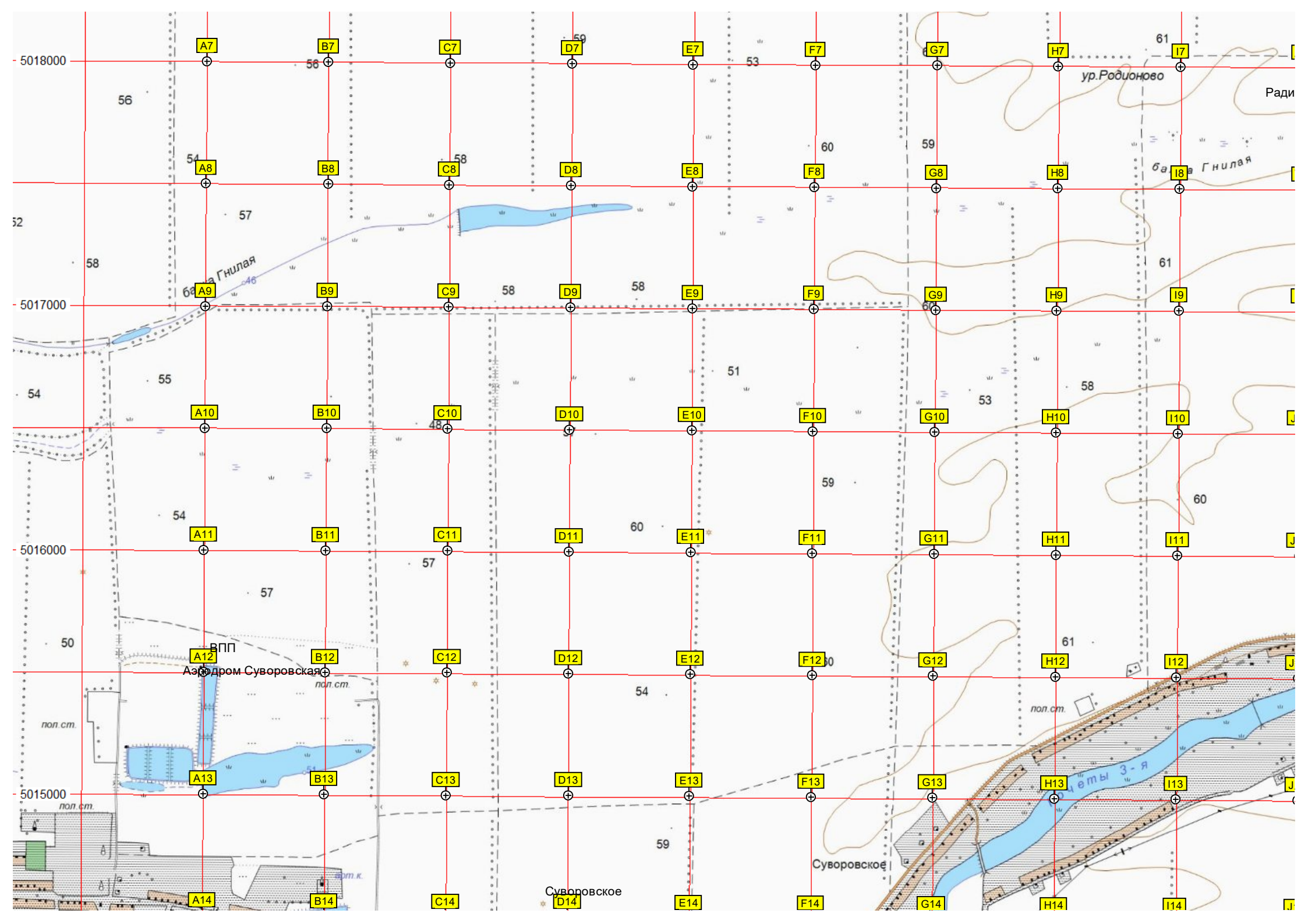
73

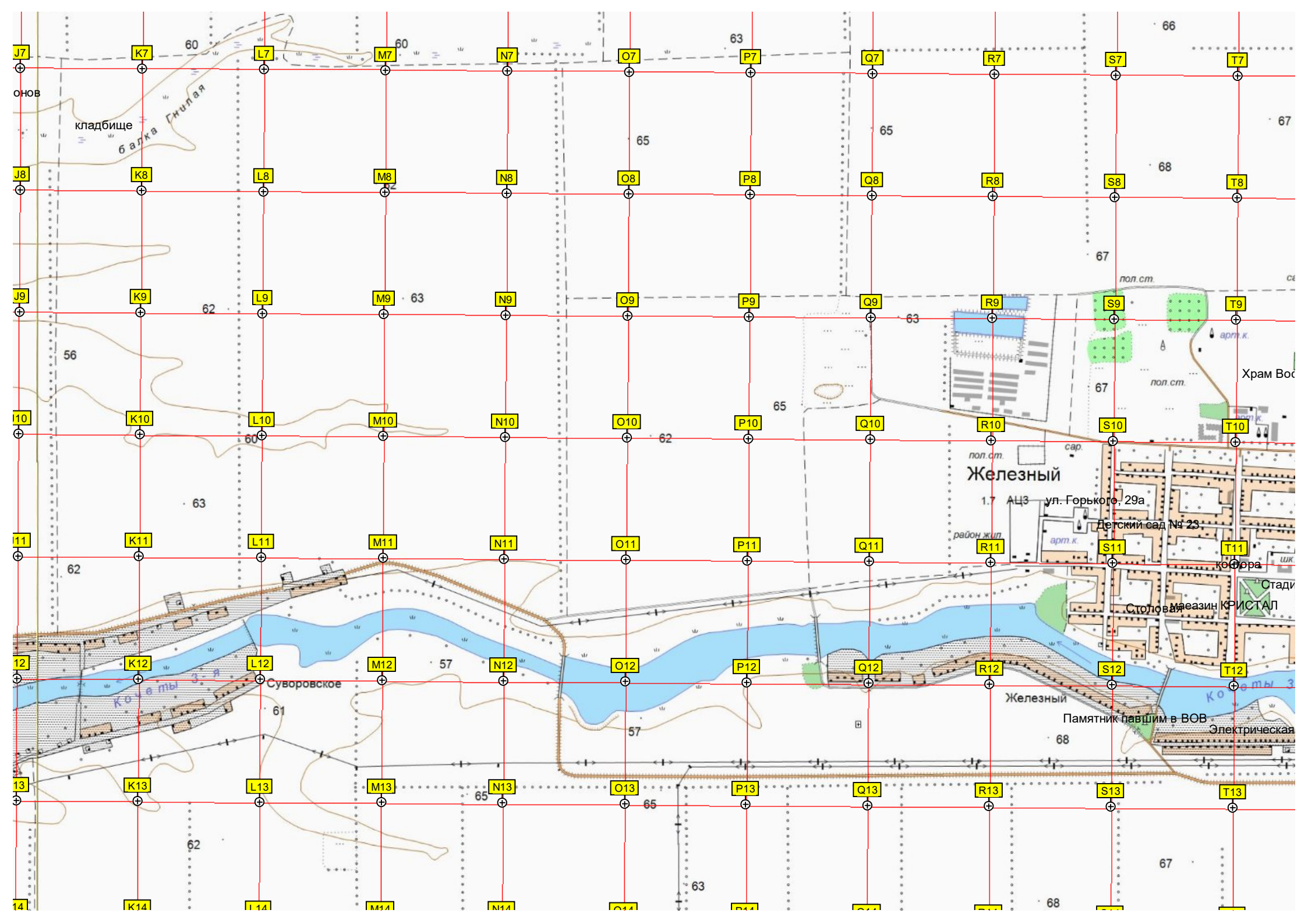
75

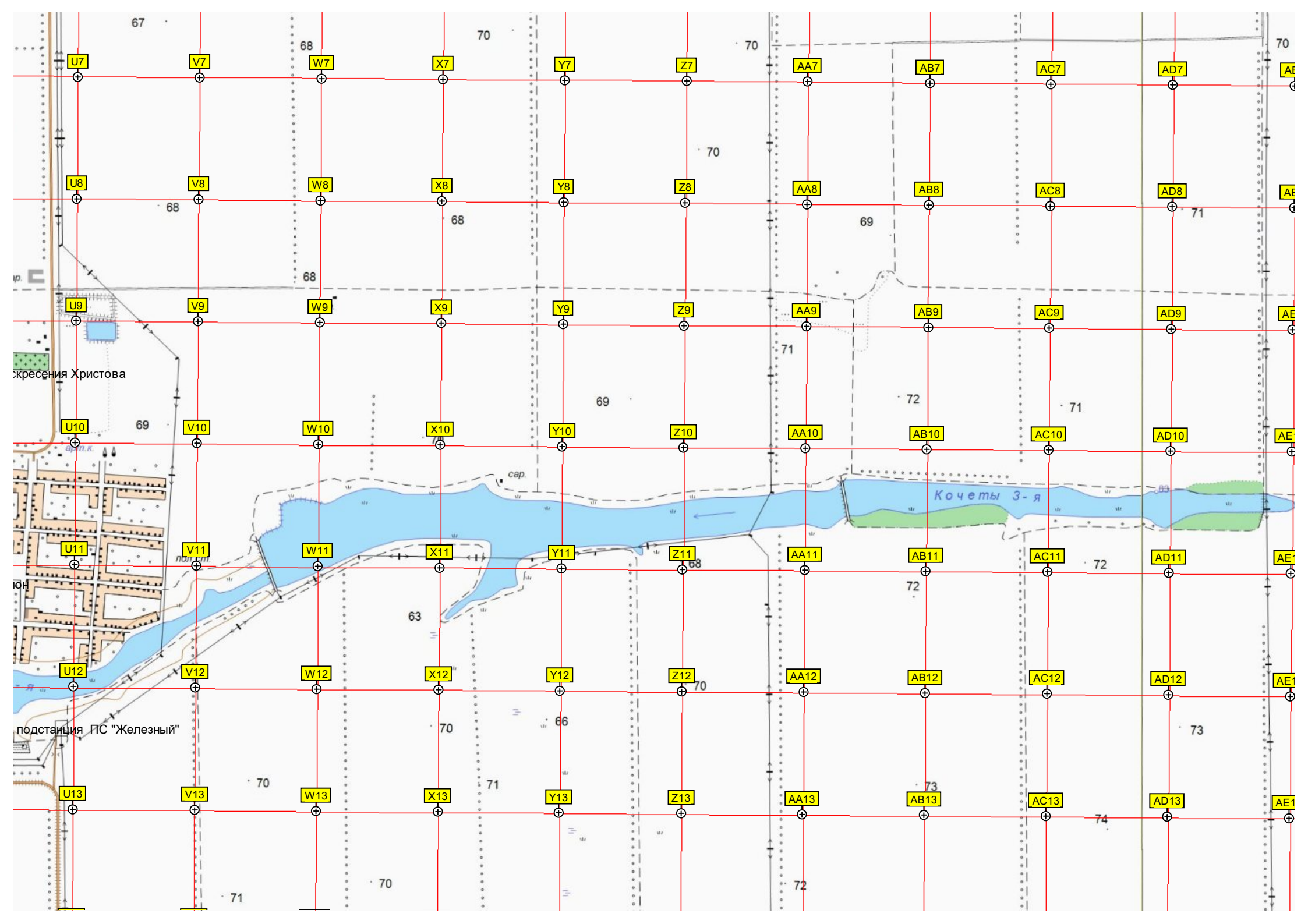
балка Курпили

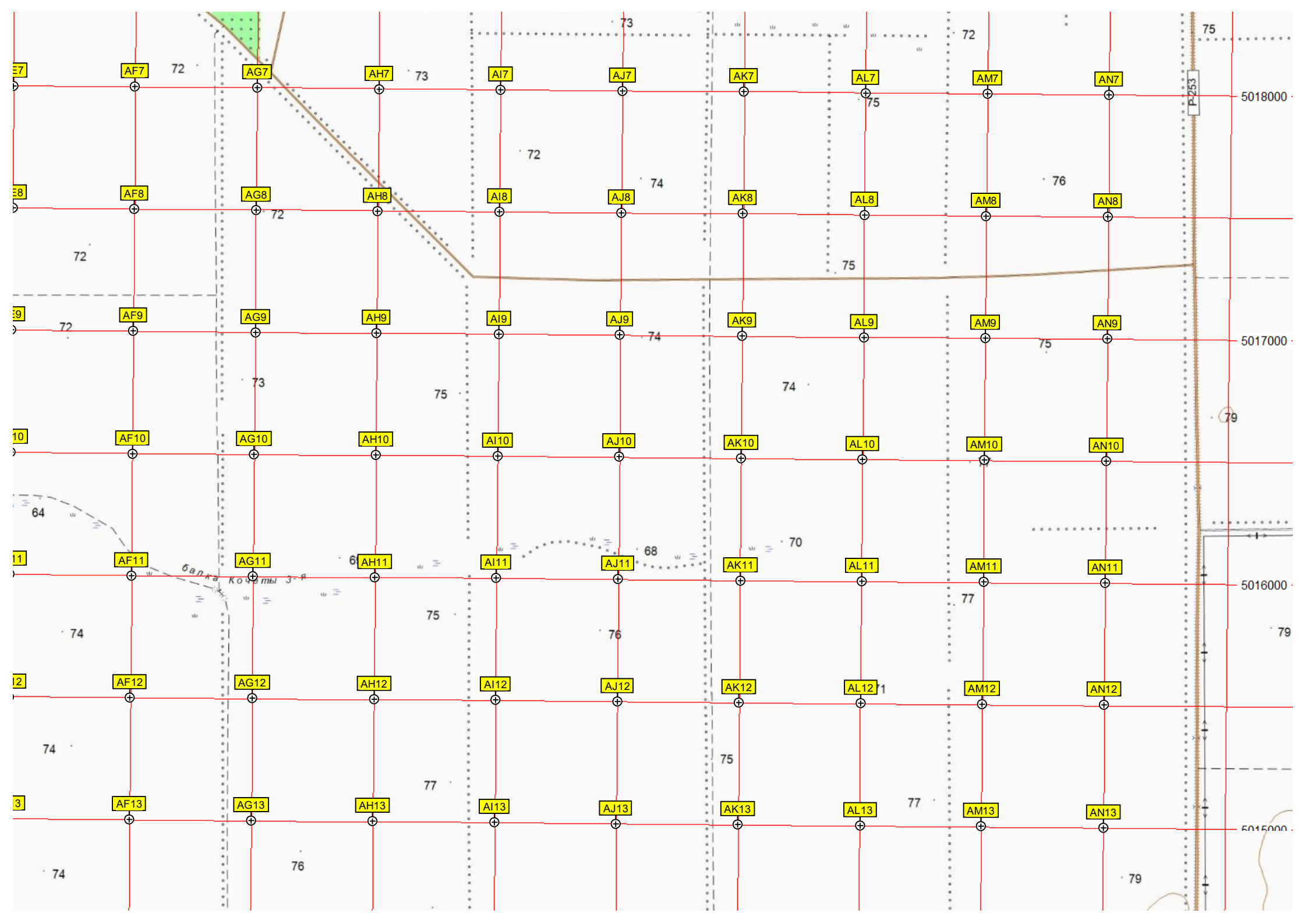
75

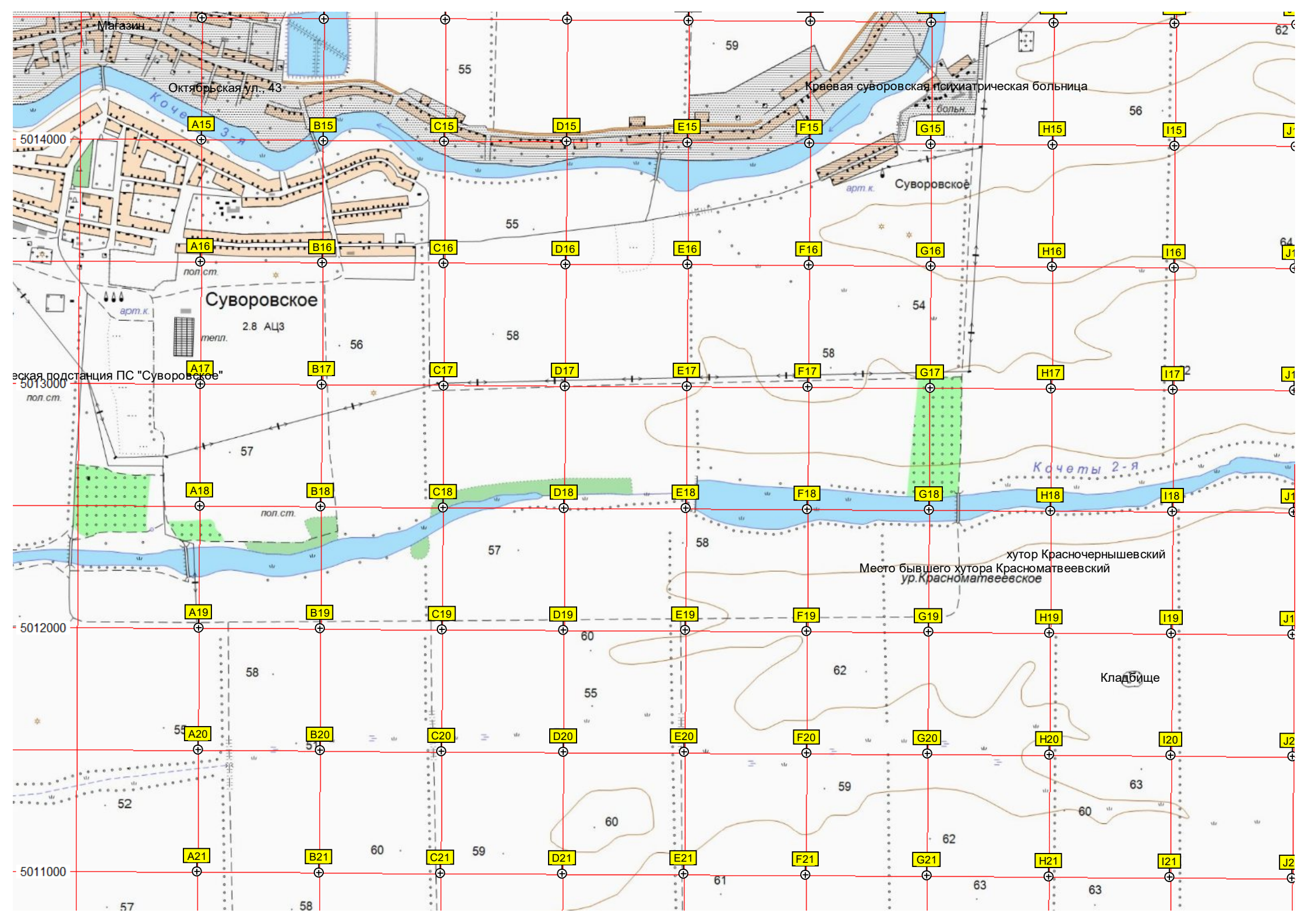
76

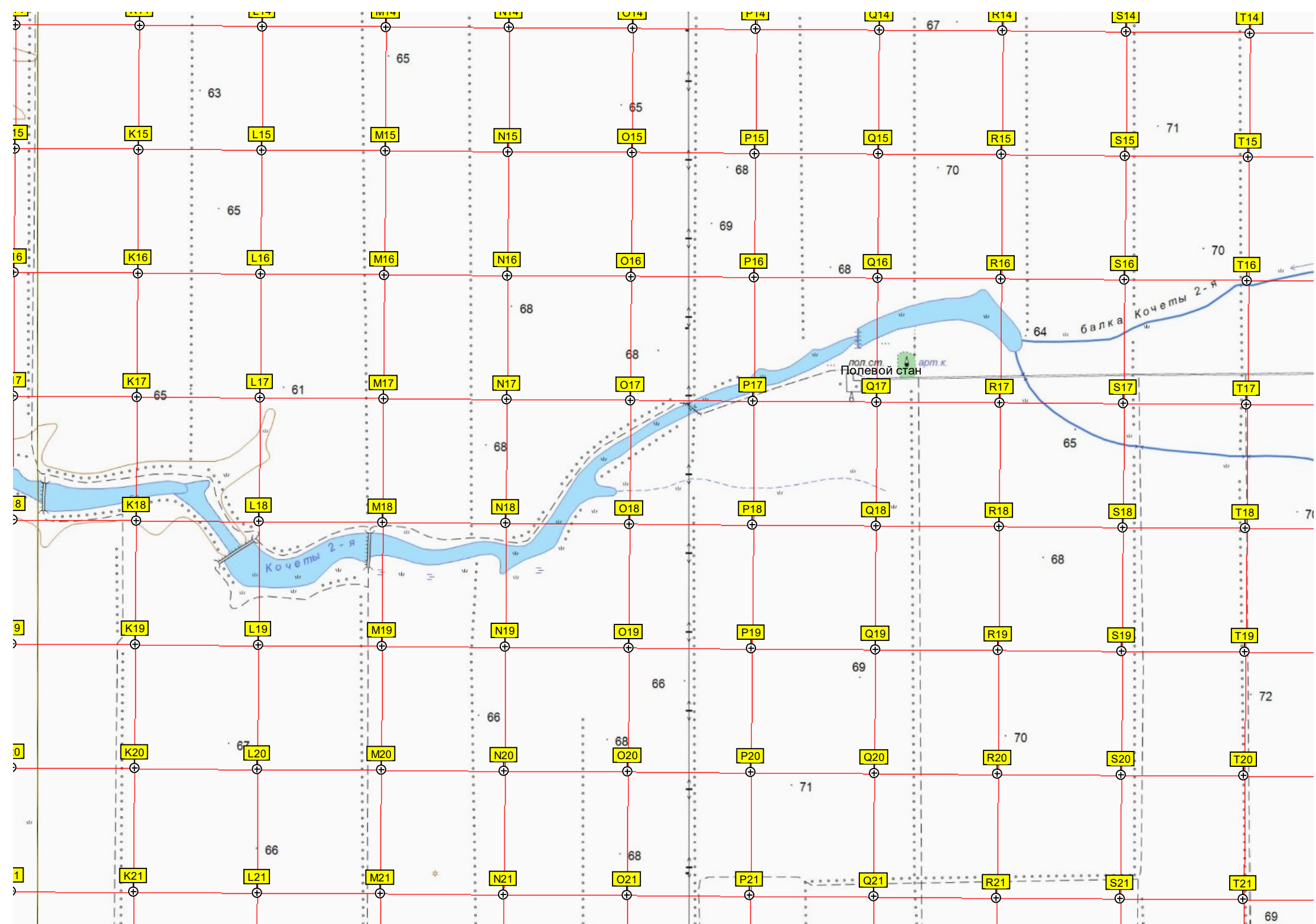


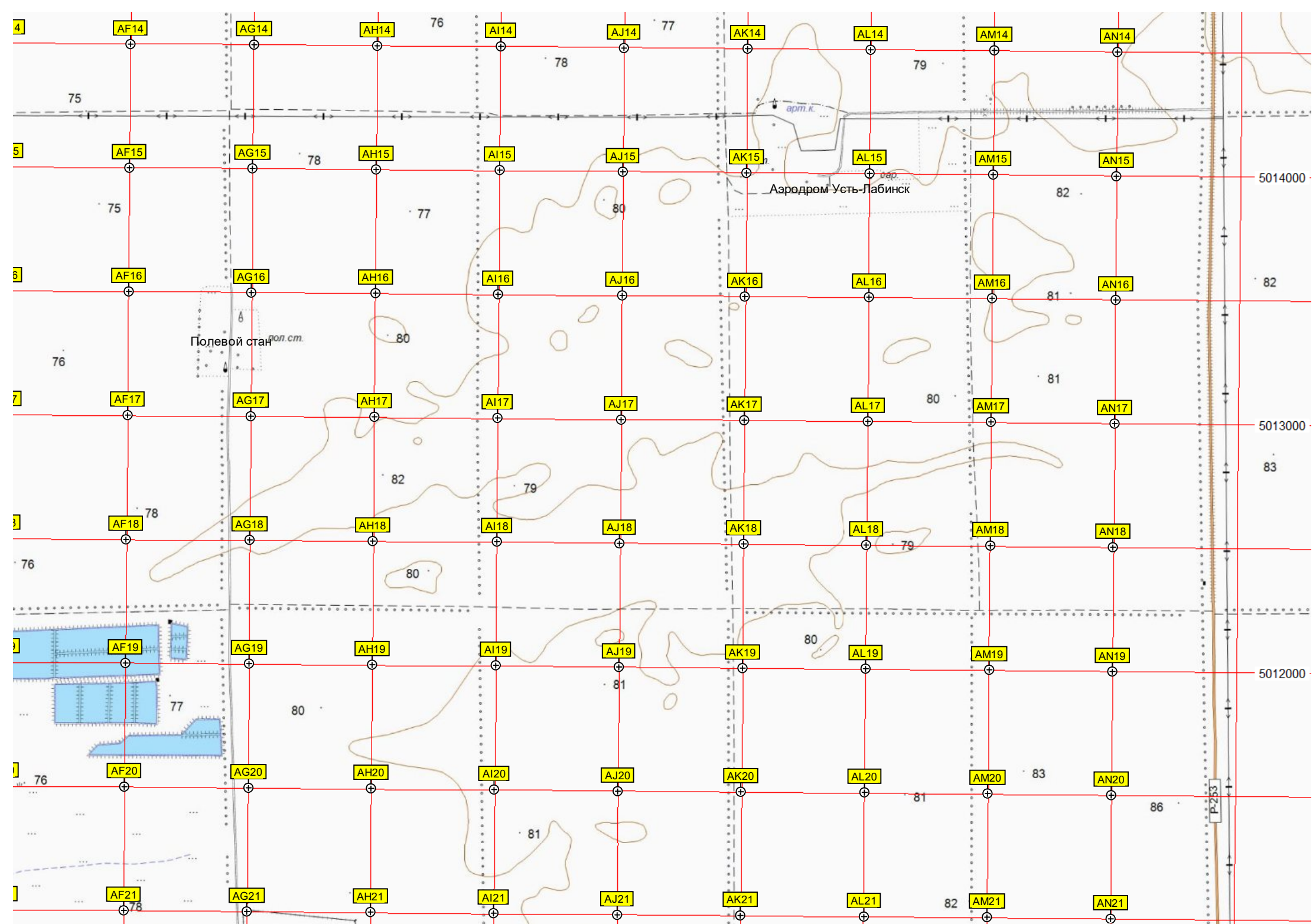


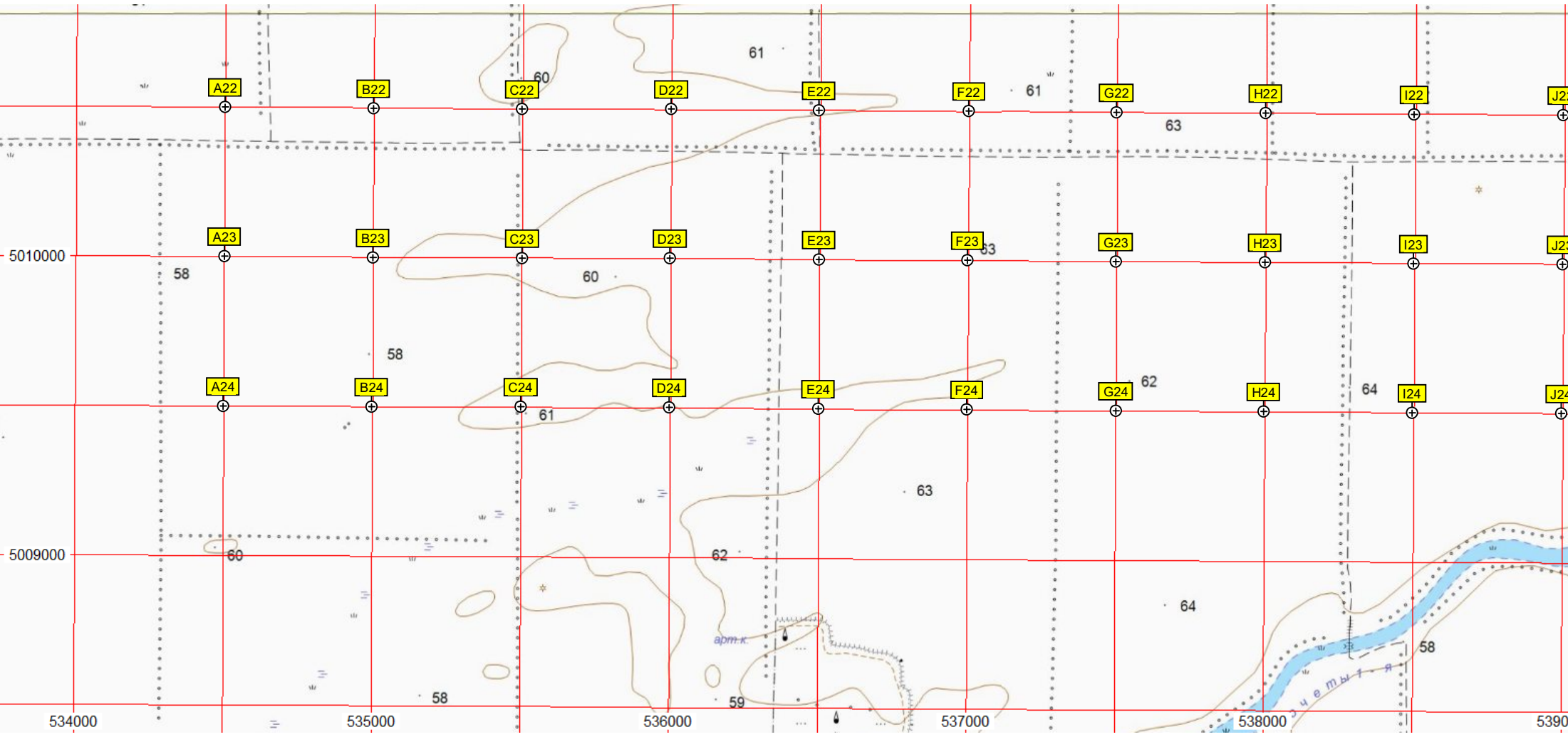


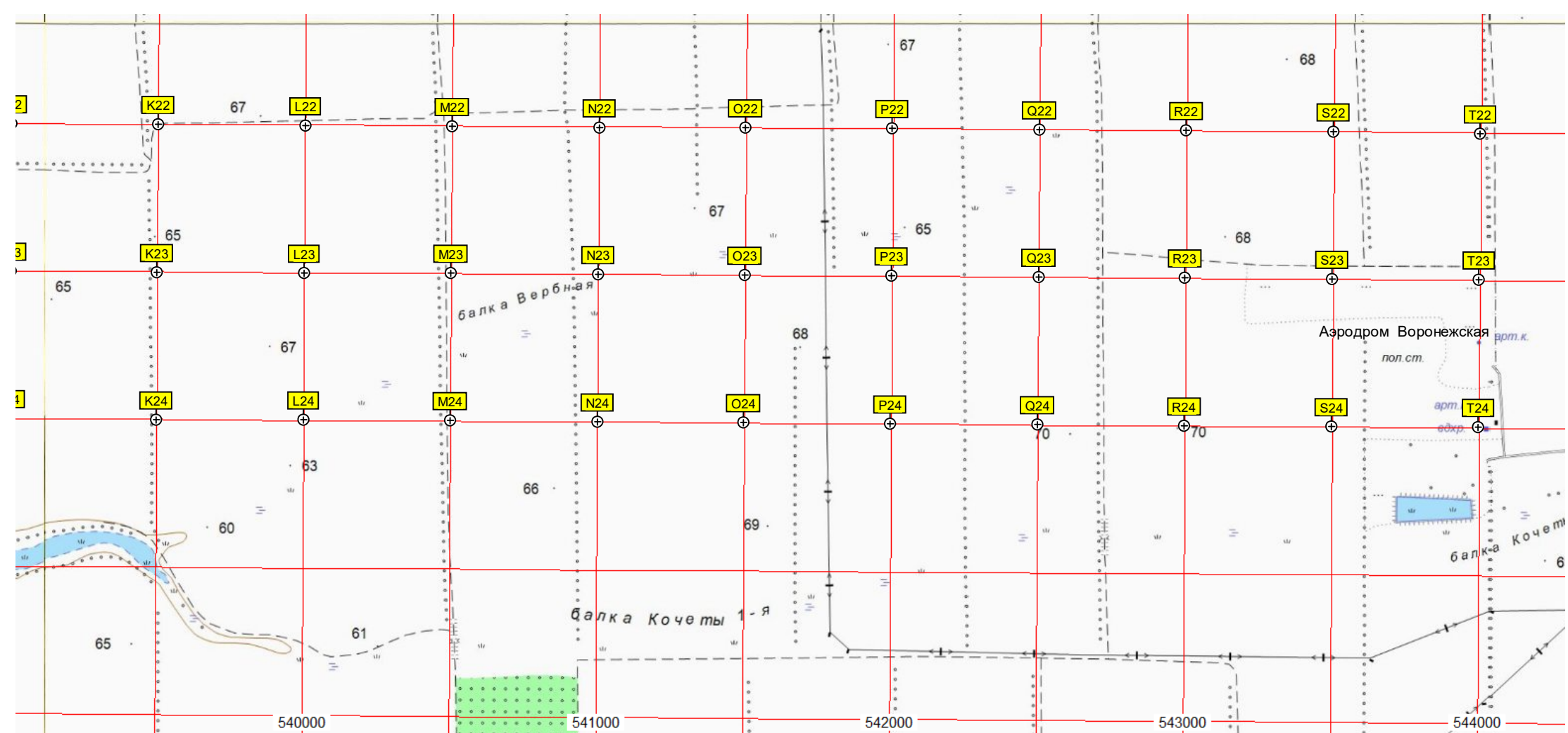


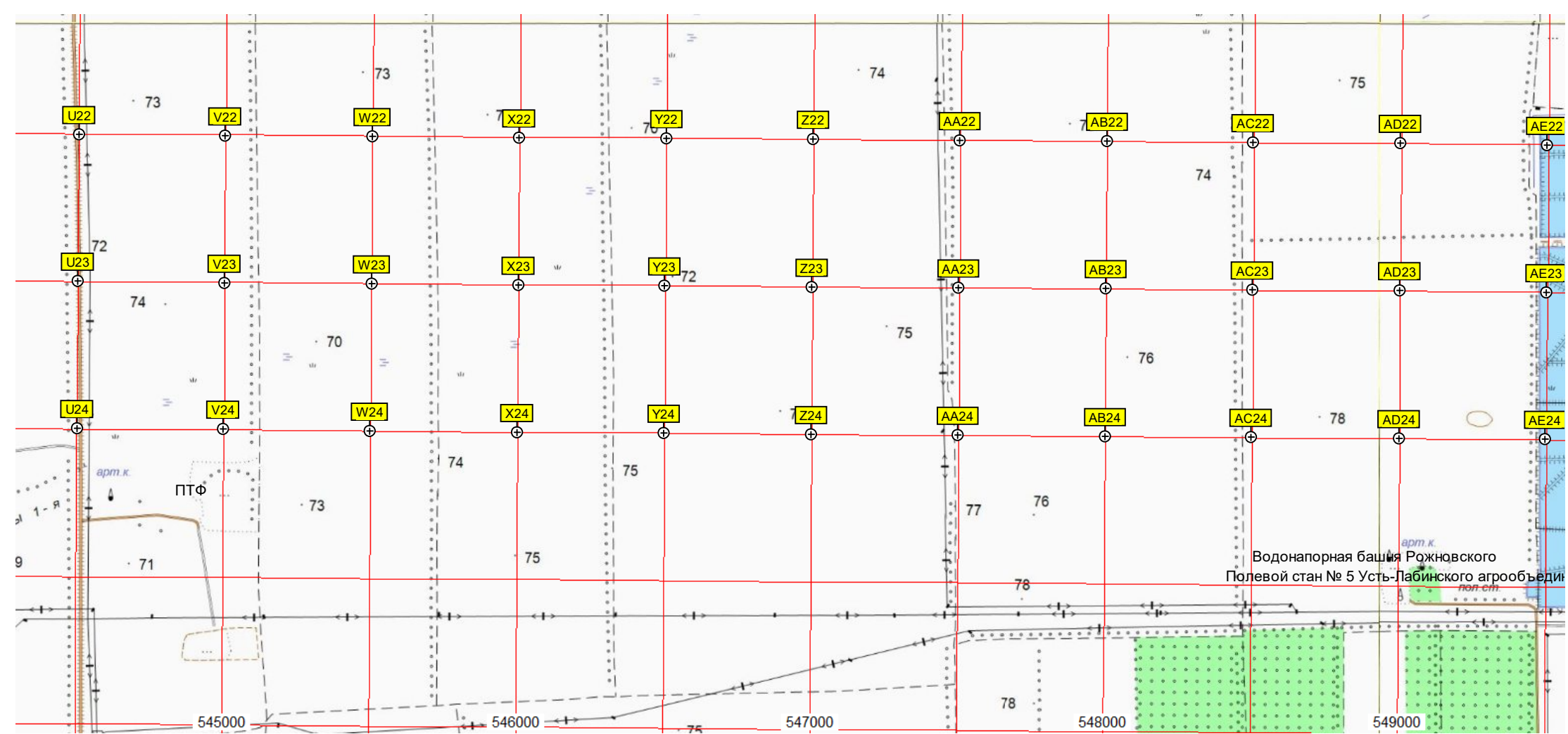












Водонапорная башня Рожновского
Полевой стан № 5 Усть-Лабинского агрообъединения

